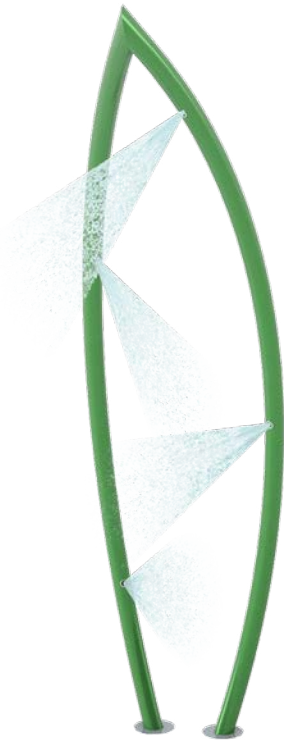
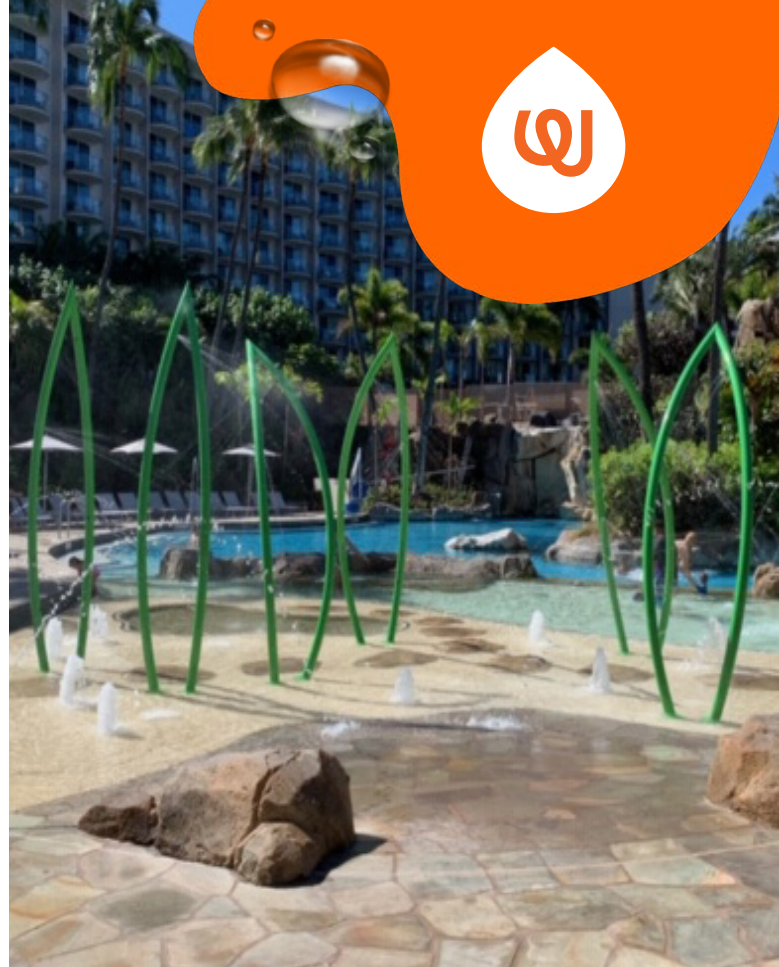


# MORNING GRASS 2

0010-1449



See Specification Sheet for product data.



## WATER EFFECT

SPRAY



## INSTALLATION

ZERO-DEPTH + WADING POOL

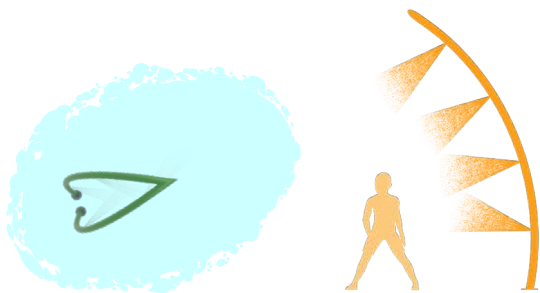


## PLAYPHASE™

DETACHABLE MOUNTING SYSTEM

## PLAY OPPORTUNITIES:

A simple blade of grass that appears to be waving in the breeze, the Morning Grass 2 is designed to spray waterplayers as they run by.



COGNITIVE



PHYSICAL



CREATIVE

Play is fundamental in childhood development, health and wellbeing. Waterplay products are designed using research that supports cognitive, social and emotional, creative and physical growth. The above icons represent the leading attributes associated with this play feature.

## PLAY ZONES:



EXPLORATION



ADVENTURE

**CATEGORY:** Columns, Nature

**PRODUCT LINE:** Freestanding Play

WATERPLAY  
BY **MAKER**

1.800.590.5552 (USA & CAN) | +1 (250) 712.3393 (INTL)  
info@waterplay.com | www.waterplay.com

For full product specification details, please refer to the product specification document. Due to our continuing product improvement program, Waterplay reserves the right to change the product specifications without notice. All product designs at all times remain the property of Waterplay or are used under license and cannot be used or reproduced without written permission.