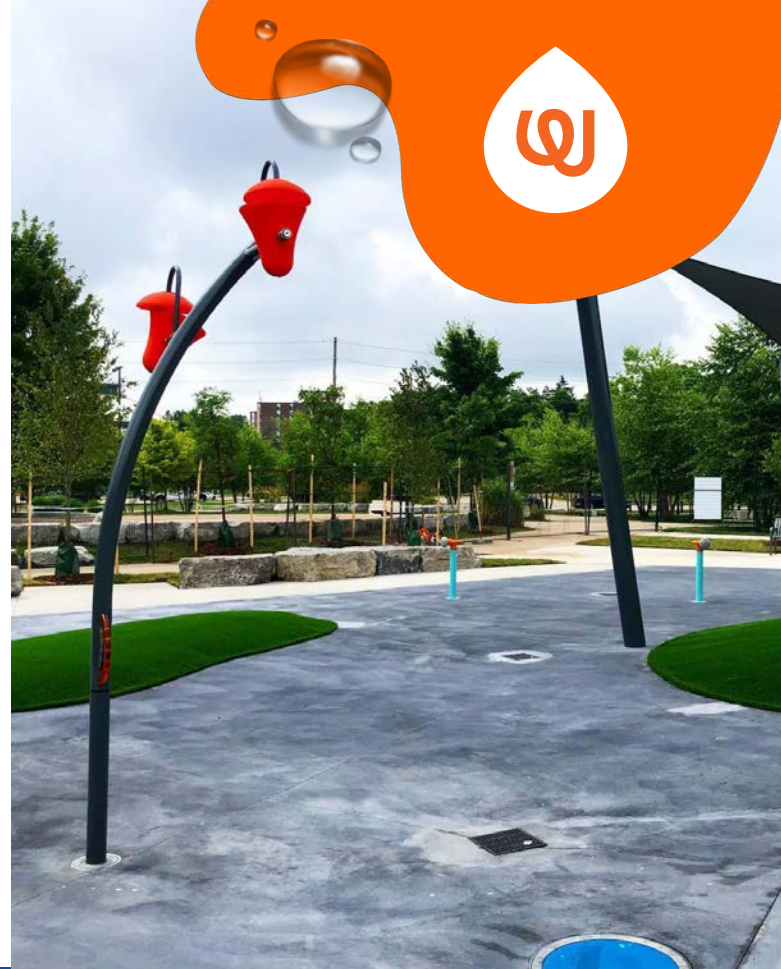


SNEAKY SPIN SOAKER 2

0010-1494



See Specification Sheet for product data.



WATER EFFECT

SPLASH & SPRAY



INSTALLATION

ZERO-DEPTH + WADING POOL

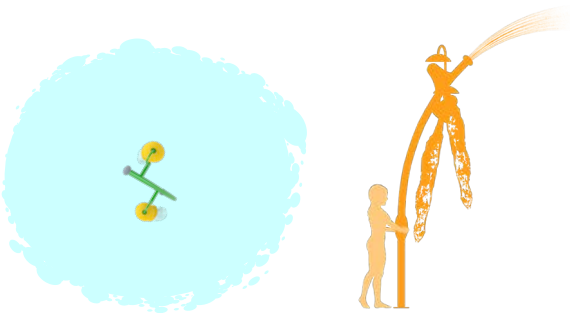


PLAYPHASE™

DETACHABLE MOUNTING SYSTEM

PLAY OPPORTUNITIES:

An exciting spin on our Sneaky Soaker! The Sneaky Spin Soaker 2 features an Aqualume® handle that lets waterplayers rotate the feature as it spills and dumps water.



COGNITIVE



SOCIAL



PHYSICAL



CREATIVE

Play is fundamental in childhood development, health and wellbeing. Waterplay products are designed using research that supports cognitive, social and emotional, creative and physical growth. The above icons represent the leading attributes associated with this play feature.

PLAY ZONES:



EXPLORATION



ADVENTURE

CATEGORY: Soakers & Spinners

PRODUCT LINE: Freestanding Play

WATERPLAY
BY **MAKER**

1.800.590.5552 (USA & CAN) | +1 (250) 712.3393 (INTL)
info@waterplay.com | www.waterplay.com

For full product specification details, please refer to the product specification document. Due to our continuing product improvement program, Waterplay™ reserves the right to change the product specifications without notice. All product designs at all times remain the property of Waterplay or are used under license and cannot be used or reproduced without written permission.