

OPERATIONS & INSTALLATION MANUAL



CONTACT INFORMATION

For additional information please contact Waterplay® Solutions Corp. (Waterplay):

MAILING ADDRESS

805 Crowley Avenue
Kelowna, BC Canada
V1Y 7G6

TELEPHONE (Mon – Fri 7:00 a.m. to 5 p.m. Pacific Time)

1-800-590-5552 in North America
01-250-712-3393 International

EMAIL

support@waterplay.com

ONLINE

www.waterplay.com

IMPORTANT INFORMATION

NOTICE: Waterplay aquatic play features require installation by qualified personnel. Use of non-qualified trades' people or use of non-approved parts will void the Waterplay Warranty.

For Waterplay aquatic play features to be considered for warranty, all guidelines outlined within this document must be followed, in addition to your project being registered directly with Waterplay online at <http://www.waterplay.com/en/park-registration/>

Prior to commencing installation be sure to read through this entire document including all other project specific documents.

Waterplay aquatic feature maintenance is the responsibility of the owner. It is recommended a maintenance log be kept documenting water quality (if using a water treatment system) and all performed maintenance. See suggested inspection check lists, water quality log, and maintenance section for guidelines on how to maintain Waterplay aquatic features, in addition to keeping your Waterplay Warranty valid. These documents may be called on if warranty issues arise.

NOTICE: When receiving Waterplay shipments inspect all items for damage and quantity immediately. Failure to do so could result in costly repair or replacement costs at the expense of the owner/installer.

When receiving any shipments from Waterplay be sure to inform the driver of any discrepancies and report as indicated on the shipping documentation when signing for receipt of goods. **All claims must be reported within 48 hours of receipt of goods. Claims reported outside of this time cannot be guaranteed.** If nothing has been noted on the Bill of Lading a claim may not be accepted. If you are unable to inspect the shipment at time of receipt you must note on the Bill of Lading **"Subject to inspection"**.



OWNER'S MANUAL CONTENTS

1.0	General	1
2.0	Project Completion.....	1
3.0	Safety Inspections.....	3
4.0	Winterization and Shut Down Procedures	3
5.0	Nozzles.....	4
6.0	smartPLAY™ Controller and Activator Operation	6
7.0	Solenoid Valves.....	7
8.0	Component Care and Maintenance.....	9
9.0	Shipment Receiving	15
10.0	Installation - General.....	17
11.0	Installation - Splash Pad Design Considerations	18
12.0	Installation - Site Preparation.....	18
13.0	Installation - Footings	19
14.0	Installation - Feature and playPHASE™	21
15.0	Installation - Feature Grounding	21
16.0	Installation - Grouting	22
17.0	Installation - Manifold	23
18.0	Installation - Park Drainage	24
19.0	Installation - Supply Line Low Point Drainage.....	25
20.0	Installation - Trenching & Piping	26
21.0	Installation - Pressure Testing.....	27
22.0	Installation - Electrical	28
23.0	Installation - Final Component Preparations.....	29
24.0	Installation - Final Pad Area Preparation.....	30
25.0	Installation – Concrete Pad Pour	31
26.0	Installation - playPHASE™ Base Features	32
27.0	Installation – Performance Nozzles.....	33
28.0	Installation – Final Items	33
29.0	Commissioning services	34
30.0	Troubleshooting	35
	Appendix A–Inspection Lists (6 Pages)	41
	Appendix B–Water Quality Log (2 Pages).....	47



1.0 GENERAL

The following information provides direction on the installation, maintenance and general operation of Waterplay aquatic play features. If additional information is needed that was not included please contact Waterplay directly.

For Waterplay aquatic play features to be considered for warranty, all guidelines outlined within this document must be followed, in addition to your project being registered directly with Waterplay.

Project registration can be done online <http://www.waterplay.com/en/park-registration/>. Registration will confirm your warranty has been validated and Waterplay has all information required to ensure important aquatic play feature maintenance and useful operating information is communicated to the appropriate parties. Registration will require your Project Registration number (ORD-####) that can be found on the front page of your Project Manual. This binder is an electronic document containing your project specific details, and is available through your dealer, or by emailing Waterplay directly at support@waterplay.com.

If the project includes a Waterplay smartPLAY™ Controller or Water Treatment System (WTS), please reference the Waterplay smartPLAY™ Controller Setup Guide or the WTS Operations & Maintenance Manual for additional information.

2.0 PROJECT COMPLETION

At the end of construction the owner should have the following items in their possession.

2.1 Documentation

- ◆ Accurate “as built” construction plans from the onsite engineer, detailing changes (if applicable) from the original layout.
- ◆ WTS Operations & Maintenance Manual (if applicable).
- ◆ Electronic document titled “Project Manual” that includes the following documents:
 - Project Drawing Set – These drawings are used as a general overview of the park layout and not to be used for park construction. These are not to be confused with “For Construction” drawings to be issued by your local engineer.

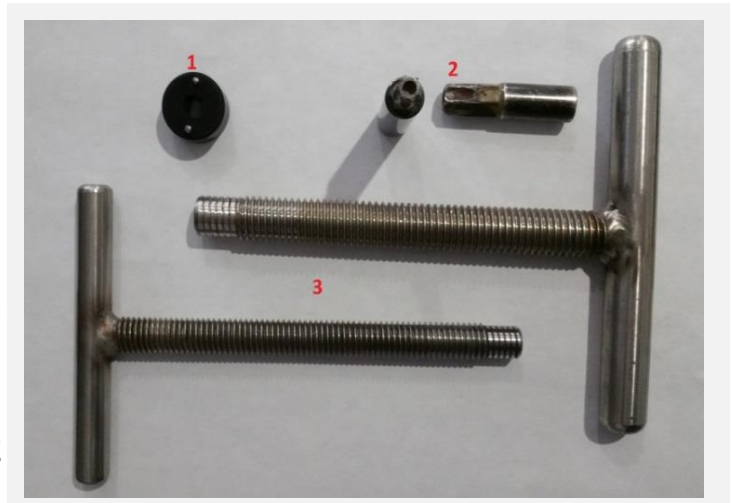


- Mechanical Workbook – Shows the recommended component water flow and valve sequencing.
- Waterplay Operations & Installation Manual – Used as general guidelines to the operation, maintenance, trouble shooting, and installation details of Waterplay aquatic play features.
- Component Specifications – Provides a general description of each component purchased.
- smartPLAY™ Controller Setup Guide / Wiring Diagram (if applicable) – A guide to the controller wiring and use of your Waterplay aquatic play features controller.
- Waterplay Warranty Information – Information on the requirements and coverage of your Waterplay aquatic play features.

Note: Park Registration is required to activate your warranty, see section 1.

2.2 Maintenance and Service Items

- ◆ Touch-up paint
- ◆ All spare nozzles and nozzle blanks (winter covers)
- ◆ Feature maintenance tools such as:
 - ◆ ¾" Spray Jet Tool (item #1), used for removing ¾" nozzles.
 - ◆ Torx Security Bits (item #2) #H27, #H45 and #H55, used for removing security bolts on features.
 - ◆ "T" tools (item #3), 5/16", 1/2" and 5/8" threaded tool used for removing 2-1/2" nozzles, 5" nozzles, and 6" nozzles.
- ◆ Additional service tools and replacement parts can be purchased from Waterplay.



3.0 SAFETY INSPECTIONS

It is the responsibility of the owner/operator to inspect the aquatic play area daily, with more thorough inspections conducted weekly and monthly or mid-season. This will assist in limiting the number of safety issues that arise. Waterplay has included recommended check lists, located in the appendix of this document, for these inspections. These checklists are meant as a starting point, each aquatic play pad owner is responsible for developing their own site specific inspection procedure.

Please view our how to videos online at <http://www.waterplay.com/en/spring-start/> for additional information and maintenance tips, or simply scan the QR code with your smart phone.



4.0 WINTERIZATION AND SHUT DOWN PROCEDURES

4.1 Winterization and Shut Down

Waterplay aquatic play features must be correctly winterized and shut down to prevent damage to components, supply lines, controllers, and manifolds during colder months or long periods of inactivity. This typically includes draining the main supply line, manifold, and all feature lines by low point drain (if installed) or blowing them out with compressed air. All components and lines must be free of water. Failure to do so could result in ice damage and costly repair costs.

- ◆ See recommended aquatic play pad check list “Winterization and Shut Down” provided in the appendix.

4.2 Spring Startup Procedures

Waterplay aquatic play features must be correctly commissioned after long periods of shut down to prevent damage to components, supply lines, controllers, and manifolds.

- ◆ See recommended aquatic play pad check list “Spring Startup Inspection” provided in the appendix.

5.0 NOZZLES

5.1 General

Waterplay features will be shipped with blank nozzles that should remain installed until construction and concrete work is complete. The blank nozzles are also used for pressure testing and winterization or shutdown periods. After park construction and pressure testing is complete the blank nozzles can be removed to flush out the lines, prior to installing the performance nozzles.

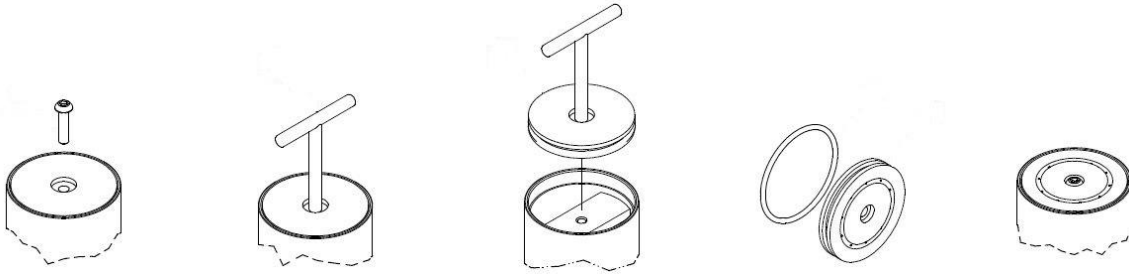
Be sure to store the blank nozzles in a safe place during the operating season as they are required to be re-installed for winterization or shut down periods

- ◆ Plans should be made to inspect the nozzle outlets on a regular basis to ensure the fittings are secure and all orifices are free of debris.
- ◆ Park operators need to frequently monitor water pressures as it's critical that water pressures are kept at a safe discharge rate.
- ◆ Nozzle removal/exchange should be conducted in the morning as a temperature rise will cause expansion of the nozzle making it difficult to remove.

5.2 Nozzles Replacement (3/4")

- ◆ Ensure the water is turned off from the manifold and pressure has been relieved in the system.
- ◆ Remove nozzle blank using supplied two pin 3/4" Jet Spray tool (See section 2.2.).
- ◆ Apply thread lubricant to nozzle threads and insert by hand into nozzle socket in a clockwise direction. Use 3/4" Jet Spray tool to tighten nozzle until snug.
- ◆ Nozzle should fit flush with component.
- ◆ Do not over tighten as this could damage the nozzle.

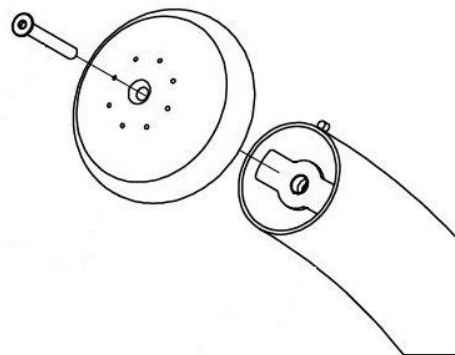
5.3 Nozzles Replacement (1-1/2", 2-1/2", 5", and 6")



- ◆ Ensure the water is turned off from the manifold and pressure has been relieved in the system.
- ◆ Remove bolt (center of nozzle) using supplied maintenance tools (See section 2.2.).
- ◆ Remove nozzle blank using supplied “T” tool (See section 2.2.). Simply start threading “T” tool into the hole where the bolt was. The nozzle will begin to work its way out as the “T” tool spins. Continue rotating “T” tool until the nozzle has been completely removed. It is important to not pull up on the “T” tool to try and remove the nozzle, as this could cause damage.
- ◆ Insert specified nozzle and ensure O-ring is sitting properly and has been lubricated. **Apply an anti-seize compound to bolt(s)** and tighten until nozzle is fully seated in nozzle chamber.
- ◆ Nozzle should fit flush with component.
- ◆ Do not over tighten as this could damage the nozzle.

5.4 Bobble Nozzle Replacement

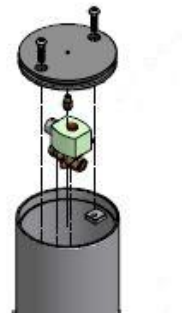
- ◆ Ensure the water is turned off from the manifold and pressure has been relieved in the system.
- ◆ Remove bolt (center of nozzle) using supplied Torx Security Bit (See section 2.2.).



- ◆ Pull off existing Bobble nozzle and attach replacement by lining up the orientation tab and sealing groove with the feature.
- ◆ Apply an anti-seize compound to bolt and tighten until nozzle is fully seated in the sealing groove.
- ◆ Do not over tighten as this could damage the nozzle.
- ◆ Bobble nozzles don't typically come with a winter blank, in this case for pressure testing it as advised to use the playPHASE base cover plate to pressure test prior to installing the feature.

5.5 Pop-It Ground Spray Nozzles (if applicable)

- ◆ Pop-It nozzles are removed the same as the nozzles in section 5.3 above except they have two security bolts and require two "T" tools (See section 2.2.) to be removed.
- ◆ Pop-It ground sprays do not include winter blanks so care needs to be made during installation not to damage the performance nozzle. These nozzles can be left in for winter months however, it is imperative the supply line and pop it valve have the water blown out. Additionally, the SMC tubing must be disconnected and the canister drain must be free of debris. See the Pop-It specification sheet for further information.
- ◆ If the Pop-It valve is not pulsing correctly it may have debris stuck inside the valve. This can be cleaned out by taking apart the valve and flushing clean.



6.0 SMARTPLAY™ CONTROLLER AND ACTIVATOR OPERATION

For complete instructions on running the controller please review the smartPLAY™ Controller Setup Guide. This will discuss how to navigate the controller functions, connect an activator, and activate the park features. This guide is included within the Project Manual.

7.0 SOLENOID VALVES

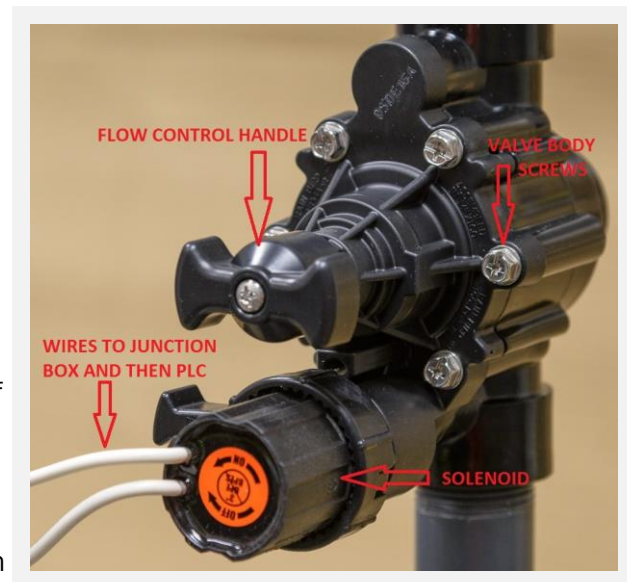
7.1 Manually Turning On and Off

- ◆ “Rotating to the “ON” position will open the valve and will stay open until it’s manually turned to the “OFF” position,
- ◆ Rotating to the “OFF” position will manually close the valve and allow for the controller to electronically turn the valve on and off.
- ◆ To run the park electronically with the controller all valves must be in the “OFF” position.
- ◆ To electronically control the valves see the Waterplay smartPLAY™ Controller Guide.



7.2 Setting the Feature Flow:

- ◆ With the controller and pump on electronically, activate the corresponding valve output using the controller Valve Test screen, or manually rotate the solenoid counter clockwise to the “ON” position. You should hear water flowing through the valve.
- ◆ Increase or decrease the flow through the component by turning the flow control handle.
- ◆ Adjust accordingly to set the desired display for the component.
- ◆ Re-engage the solenoid body clockwise to the “OFF” position, or turn off the output using the controller Valve Test/Auto screen if this is how it was opened.
- ◆ Flow may need to be re-adjusted during standard park operation if features are sequenced as this can affect the flow.



7.3 Cleaning the Valves:

- ◆ Isolate the solenoid valve from the manifold by closing the supply to the valve and if possible the supply to the manifold.
- ◆ Drain the leg the valve is connected to.



- ◆ Remove the solenoid valve by rotating counter clockwise and inspect the O-ring for debris, damaged or twisting.
- ◆ Unscrew the six screws on the valve body and remove the diaphragm, and spring.
- ◆ Check for any debris on the filter screen and or diaphragm inside.
- ◆ Be sure not to lose any small items like the internal spring, or bolts.
- ◆ Reassemble the valve.

7.4 Water Hammer:

If the valve appears to be vibrating excessively and sounds of water hammer are present (a pulsing thud or ticking noise), this usually means air is trapped in the valve. This can be fixed by loosening the top two and middle two valve body screws one to two full turns. If required use a flat head screw driver to pry the valve body and valve top open. This will allow the air to purge and some water to shoot out as well.



8.0 COMPONENT CARE AND MAINTENANCE

Caution:

- ◆ Test new cleaning products on a small inconspicuous area to check for adverse effects.
- ◆ Do not use power washers or electric polisher on decal products.
- ◆ Review product manufacturer instructions for specific details.
- ◆ Cleaning products are available for purchase from Waterplay.

8.1 Environmental Considerations

8.1.1 Water Quality:

For projects that utilize a Water Treatment System, Waterplay requires a maintenance log be kept with the minimum daily measurements: ORP, PH and Combined Chlorine etc. Total Dissolved Solids should be measured weekly. The maintenance log needs to be recorded for the life of the Waterplay equipment. This will ensure a corrosive environment is not created due to a chemical imbalance, thus shortening the working life of Waterplay aquatic play features and components.

Shocking of sanitizer will result in the rapid decay of powder coated products. The passive layer of stainless steel will also decay, resulting in potential rust issues that are not covered under warranty. See U005 Waterplay Warranty Policy for full details.

Features installed in pool environments require excellent control of water chemistry. Features immersed in water require extra attention to cleaning as this produces a harsh environment for the features.

For potable parks, hard water deposits will collect over time on the components. How quickly this occurs will depend on the municipal water quality.

8.1.2 Air Quality:

Indoor aquatic facilities should take careful consideration into planning sufficient air turnover rates and humidity control, to prevent premature decay of powder coat and Stainless Steel.

Industrial fallout should be considered for any outdoor play area located near an industrial area, as there is the possibility of airborne contaminants coming from heavy equipment, carbon steel equipment, industrial exhaust etc. Increased maintenance intervals for cleaning the components will be required to prevent premature decay of powder coat and Stainless Steel.

Outdoor play areas located near train tracks may also experience fallout from brake dust and train track wear. In these instances increased maintenance intervals for cleaning the components will be required to prevent premature decay of powder coat and Stainless Steel.

8.1.3 Regular Cleaning

- ◆ Use a mild soap and clean water with a soft brush or cloth to wipe down features. Waterplay recommends SlideRenu - Slide Soap or similar product.
- ◆ The frequency can be adjusted dependent on the surrounding environment and spray park water quality. Adjust cleaning schedule as needed to keep a clean shiny park.

8.1.4 Heavy Cleaning

- ◆ If there are signs of water staining conduct a more thorough cleaning using a detergent or high PH degreaser. Waterplay recommends SlideRenu - Slide Detergent or similar product.
- ◆ Use a soft brush or clean cloth to scrub the feature.
- ◆ Follow product directions for dilution and soak time if required.
- ◆ If hard water mineral deposits, oxidation, and scale start forming on the features, use a scale remover with a non-scratch pad to remove. Waterplay recommends SlideRenu – Calcitrol or similar product. Rinse features with water thoroughly when finished.

8.1.5 Polishing

- ◆ To remove any scrapes or scratches use a polishing compound with an electric polisher. Thoroughly clean and dry the feature prior to starting as described above.
- ◆ Apply polishing compound evenly and be sure not to use excessive force or stay in one spot too long, this will cause fading and deterioration of the finished surface. Waterplay recommends SlideRenu - Slide Polish or similar product.
- ◆ Let polishing compound haze over or dry, then wipe with a clean cloth.
- ◆ Once polishing is complete, wax will need to be applied to restore a glossy finish. See below for wax process. If polishing does not remove powder coat scratches, see Touch up Paint Procedure.

8.1.6 Waxing

- ◆ Apply wax on a regular basis to protect and prevent fading from UV, weather exposure and environmental contaminants. This will assist in keeping a shiny new appearance. Waterplay recommends SlideRenu - Slide Wax or similar product.
- ◆ Wax is applied using a clean cloth by hand or using an electric polisher. Evenly distribute wax and wipe off with a clean cloth after the wax has hazed over or dried.
- ◆ If using electric polisher be sure not to use excessive force or stay in one spot too long as this will cause fading and deterioration of the finish surface.

8.1.7 Touch Up Paint

- ◆ Protect the area from potential spillage and overspray. Allow product to fully dry each step.
- ◆ Clean the area with a damp cloth.
- ◆ Wet sand the area with 600 grit (or finer).
- ◆ Mask the area only requiring the primer, where metal is exposed.
- ◆ Apply a light coat of primer. Repeat as necessary.
- ◆ Remove the masking, wet sand the area and feather the sides around the primed area leaving the mid area slightly raised. Clean the area with water and a damp cloth, then let dry.
- ◆ For final painting, remove all masking and apply a smooth light coat spraying slightly beyond the area. Repeat process until the primer is not visible. Take time to ensure paint does not run and use multiple light coats allowing paint to dry between each coat.



8.2 Brushed Stainless Steel (Grades 304/316)

8.2.1 Regular Cleaning

- ◆ Components should be rinsed with fresh water daily; this will wash away accumulated contaminants and chemicals.
- ◆ Components should also be wiped down bi-weekly with a soft cloth or sponge, in the direction of the grain.

8.2.2 Heavy Cleaning (surface rust and pitting)

In the event Waterplay features exhibit signs of surface corrosion, the corrosion should be removed as soon as possible to prevent further damage caused by pitting. Waterplay recommends E-NOX CLEAN, a high strength stainless steel cleaner or similar product.

- ◆ Apply the cleaner to the contaminated brushed stainless feature, let sit (minimum one day), and then rinse and wipe with a wet cloth or sponge.

- ◆ If chemically cleaning the feature does not work on its own, a non-scratching Scotch-Brite pad can be used in the direction of the grain as a more abrasive method of cleaning.
- ◆ **Do not use steel wool** as this can scratch the surface of the stainless steel and contaminate the feature with carbon steel.

8.3 Plastic and Composites

- ◆ Wash panels with clean water and remove any loose grime with a clean wet cloth or pressure washer at low pressure. Clean cloth often to prevent small particles from scratching the panel.
- ◆ If the panels are etched, have small scratches; a polish can be used to buff out the etching or scratches. Waterplay recommends SlideRenu - Slide Polish or similar product.
- ◆ To help in cleaning in the future the panels can be coated with a layer of good quality car wax; do not use silicone based waxes.
- ◆ Water quality and surrounding environment will determine how often the panels need to be cleaned.

8.4 Cleaning HDPE Components

Rinse with clean water to remove loose debris, a soft bristle brush and/or pressure washer at low pressure can aid in debris removal, then clean with a mild detergent and water, rinse well with clean water to remove any detergent residue.

8.5 Before and After Photos

8.5.1 Aluminum Dumping Bucket



8.5.2 Fiberglass Slide Flume

After Cleaning



After Polishing/Waxing



After Cleaning



After Polishing/Waxing



8.5.4 Stainless Steel Column (brushed finish)

After Cleaning



After E-Nox Clean



9.0 SHIPMENT RECEIVING

When receiving any shipment from Waterplay be sure to inspect the shipment and inform the driver immediately of any damage or missing items. Report as indicated on the shipping documentation when signing for receipt of goods. If nothing has been noted on the Bill of Lading a claim may not be accepted. If you are unable to inspect the shipment at time of receipt you must note on the Bill of Lading "Subject to inspection". All claims must be reported within 48 hours of receipt of goods. Claims reported outside of this time cannot be guaranteed.

9.1 Inspect for Damage

Waterplay takes photos of all major project orders prior to shipping from our manufacturing facility. These photos are sent along with your notice of shipment and are a valuable tool for helping you inspect your goods upon receipt. When opening the truck or container, compare immediately to the way it look when it shipped from our site. If it is significantly different, it should be an indication that something changed on route. Also, be careful to ensure that you are receiving the complete number of items as noted on the Bill of Lading and in the photos.

- ◆ Inspect the component wrapping to look for tears, cuts or smudges.



Waterplay component wrapping as placed in truck for shipment.



Component wrapping at destination indicating shipping damage.



- ◆ Inspect shock watch stickers to ensure all clear.



9.2 Inspect for Accuracy

- ◆ Confirm the correct number of items has been received; this includes spray features, anchor hardware, DEX Bases, fasteners, nozzles blanks (installed for shipping and pressure testing) and performance nozzles (shipped loose for install after park construction).
- ◆ Review shipping documents and compare to original order.
- ◆ If you are unable to inspect the shipment at time of receipt you must note on the Bill of Lading “Subject to Inspection”.

9.3 Report Discrepancies

- ◆ If found, indicate damage or missing items on Bill of Lading at time of receiving.
- ◆ Contact the transport company indicating your way bill number and request an inspection. This will initiate the claim.
- ◆ Contact Waterplay’s Project Support within 48 hours and send a copy of the Bill of Lading with recorded damage and or missing items, as well as the shipping provider’s claim number.
- ◆ Provide photos of the damage prior to unwrapping and after, to both Waterplay and the shipping provider.

9.4 Storage

- ◆ Components should be stored indoors out of the elements with protective wrapping in place.

- ◆ If protective wrapping becomes damp it should be removed as this could cause discoloration and fading of the feature finish coat and void the Waterplay Warranty.

10.0 INSTALLATION - GENERAL

The following information is provided to ensure that the installation of Waterplay features is done correctly and the resulting facility is a success. It is the responsibility of the park owner and general contractor to ensure all aspects of the construction is performed by skilled personnel under the direct full-time supervision of the corresponding licensed tradesperson.

Waterplay feature installation must be conducted in accordance with Waterplay guidelines and installation details provided for each feature, acceptable construction practices, local codes, and authorities having jurisdiction (AHJ). When required, approval by the engineer of record should be documented.

To ensure a smooth installation always plan ahead, the following list covers some key points and items to be verified or discussed prior to proceeding with the installation:

- ◆ Ensure all required approvals and permits are in place from local authorities such as health, building, by-law, etc.
- ◆ Obtain approved “For Construction” drawings from local engineer(s). This should include at minimum; site grading, plumbing, electrical, footing and final slab requirements. If conflicting information is found in documents, local codes will govern. Verify with project engineer regarding any changes.
- ◆ Ensure all applicable trades people review “For Construction” drawings and other installation documents prior to allowing work to commence.
- ◆ Confirm that the feature shipment has been thoroughly inspected for missing items or damaged goods, and any concerns duly noted on the Bill of Lading and communicated to the shipper and Waterplay. It is imperative the any findings are duly noted at time of receipt and that Waterplay is notified within 48 hours of receipt of goods.
- ◆ Verify that the finished surface will conform to local codes and follows designed grading plans approved by the local engineer or AHJ.



11.0 INSTALLATION - SPLASH PAD DESIGN CONSIDERATIONS

- ◆ Waterplay recommends a minimum overspray zone of 2.44m (8ft.) to help avoid damage to surrounding areas and keep pedestrian traffic from getting wet. Overspray zone must include a positive drainage slope to the splash pad drains. If the overspray is sloped away from the splash pad this has the potential for flooding and damaging the surrounding landscape. Areas with frequent high winds may need a larger overspray zone. See Waterplay Pad Concept Layout drawing.
- ◆ Slopes (main splash pad and overspray areas) are to provide positive drainage to the drains, Slope grades are subject to local engineer's approval. Be sure not to have any low points around features or ground sprays as pooling will affect feature performance.
- ◆ All splash pad electrical products that have specified drainage connections must be connected correctly. Failure to do so will result in premature failure of electrical components. Electrical connections must be completed in a water tight manor.

12.0 INSTALLATION - SITE PREPARATION

Contact local "Call Before You Dig" groups to obtain all required information and approvals prior to beginning site work.

12.1 Site Survey

- ◆ Locate the spray pad within the intended area and complete site layout.
- ◆ Verify all required distances are maintained from property lines.
- ◆ Suggested backfill of trenches is 6" (150mm) of sand below the pipes and 8" (200mm) above.
- ◆ Suggested backfill of the spray pad area is 6" (150mm) of base coarse aggregate.

12.2 Excavate

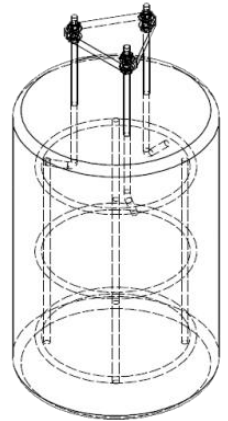
- ◆ Excavate to intended depths and slopes, maintaining tolerances per the spray pad design.
- ◆ Comply with local codes, safety regulations and authorities having jurisdiction.



13.0 INSTALLATION - FOOTINGS

13.1 Footing Type

Component specification sheets for the facility's components are shipped with the anchor hardware. All footing details provided are only recommendations and must be confirmed with local engineer prior to commencing work. Please reference the "For Construction" drawings (provided by local engineer) to ensure the footing details are as per your local codes.



13.2 Footing Location

- ◆ Confirm each footing excavation is correctly located, oriented and at the proper elevation to the other components.
- ◆ Excavate to the specified depth.

13.3 Footing Reinforcement

- ◆ Construct forms and place the required reinforcement.
- ◆ Maintain specified minimum cover around reinforcement.
- ◆ Electrically ground the footing reinforcement according to local codes and regulations.

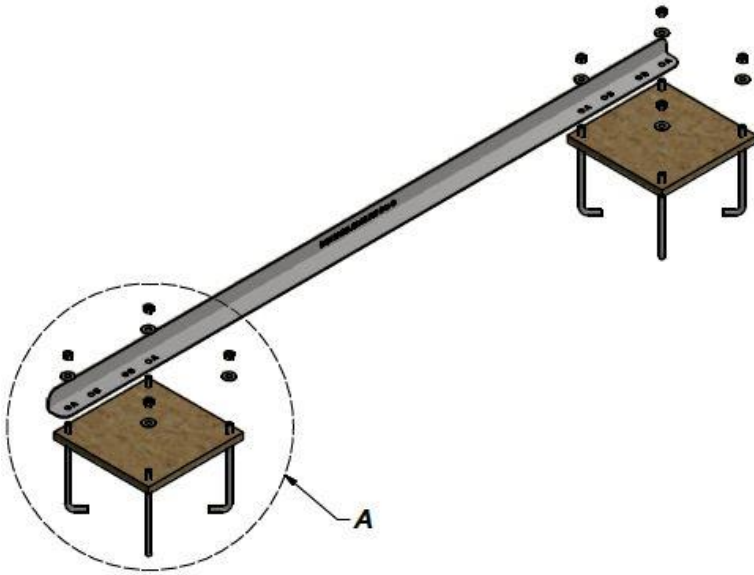


13.4 Anchor Hardware

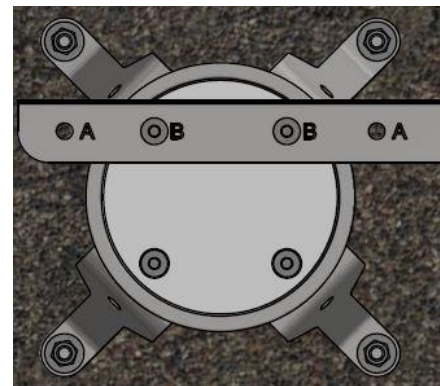
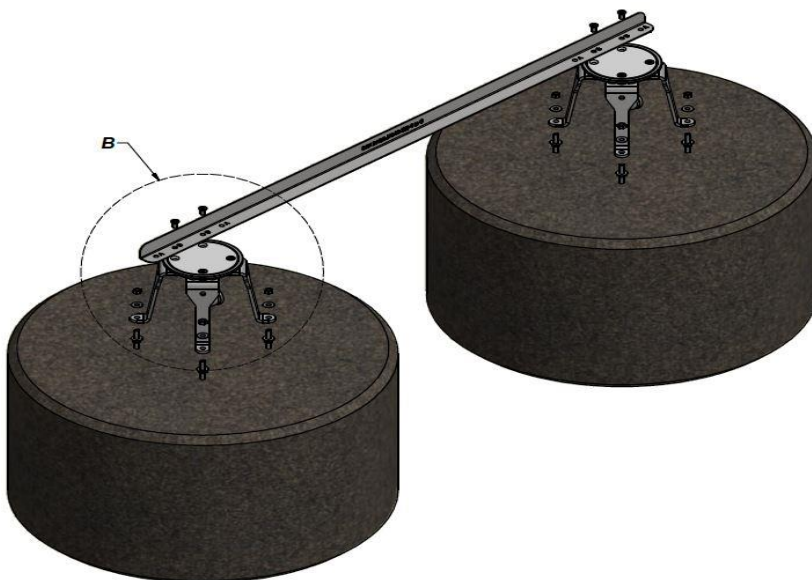
- ◆ Secure hardware wooden templates with anchor hardware to forms for feature or playPHASE™ base attachment.
- ◆ Confirm orientation is correct.
- ◆ Allow 2" (50mm) clearance between top of concrete footing and bottom of template. Please refer to local codes and specifications for proper embedment depths.



- ◆ Double footed features require a jig between footings for correct bolt locations as well as center to center spacing.
- ◆ Holes labelled “A” are to be used to set the spacing of the anchors bolts
- ◆ Holes labelled “B” are for the flange fasteners to ensure the bases are level with one another.



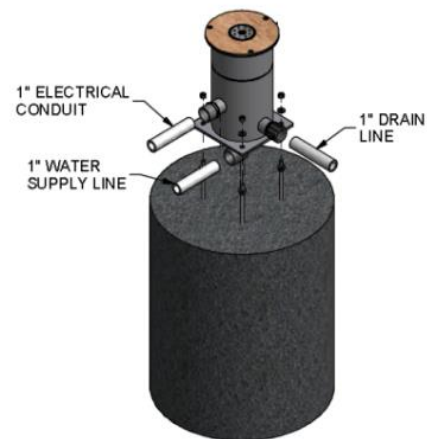
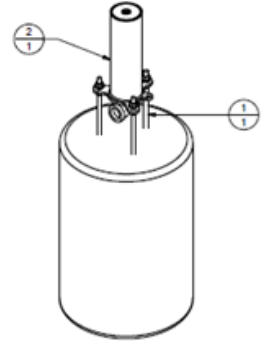
Detail A: Anchor hardware through Jig Holes “A”



Detail B: playPHASE hardware through Jig Holes “B”

14.0 INSTALLATION - FEATURE AND playPHASE™

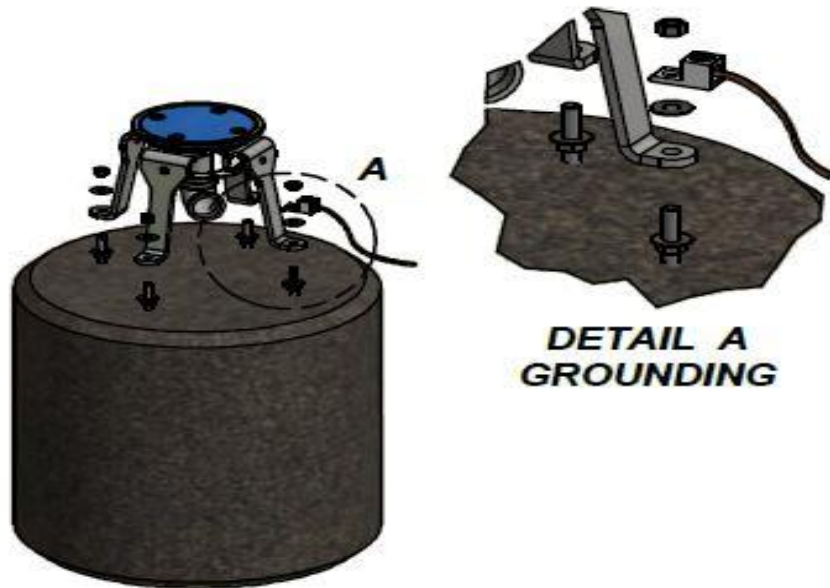
- ◆ Ensure concrete footings have set (as per local specifications) and are ready for embedded feature or playPHASE™ base installation.
- ◆ Remove the top nuts, washers, footing templates and footing forms from the concrete footing.
- ◆ Keep the nuts and washers for component or playPHASE™ placement.
- ◆ Install each component and playPHASE™ base on the assigned footing anchor bolts. Confirm correct orientation of each component to prevent water spray to undesired or dry areas.
- ◆ Complete final elevation adjustments with bottom nuts on J-bolts. Use the second nut to secure in place.
- ◆ Ensure that the tops of the bases (including cover plate) are adjusted to be flush and level with the final finished grade of the spray pad.



15.0 INSTALLATION - FEATURE GROUNDING

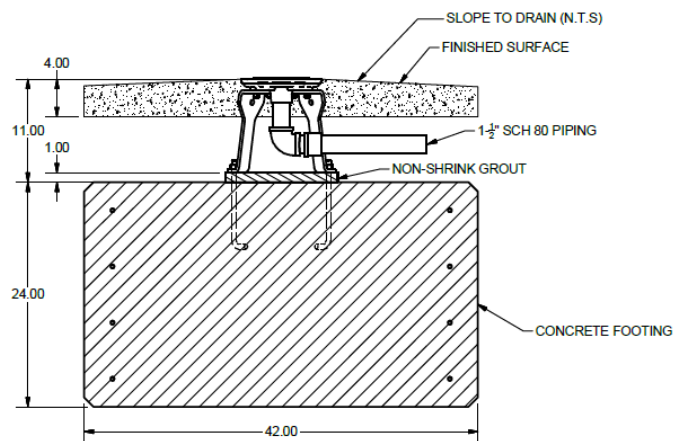
- ◆ Loop ground wire for all components and playPHASE™ bases together on a continuous circuit to a grounding rod (or as per your local electrical codes) with a UL/CSA approved lug nut or grounding tab (supplied by others).
- ◆ Grounding requirements are to be approved by the local engineer of record before commencing work.





16.0 INSTALLATION - GROUTING

- It is recommended that a self-leveling, non-shrink cementitious grout is used to fill the void between the footing and the feature base or playPHASE™ feet.
- Build wood forms if required around component base to accept grout.
- Let set as per manufacturer's recommendations.

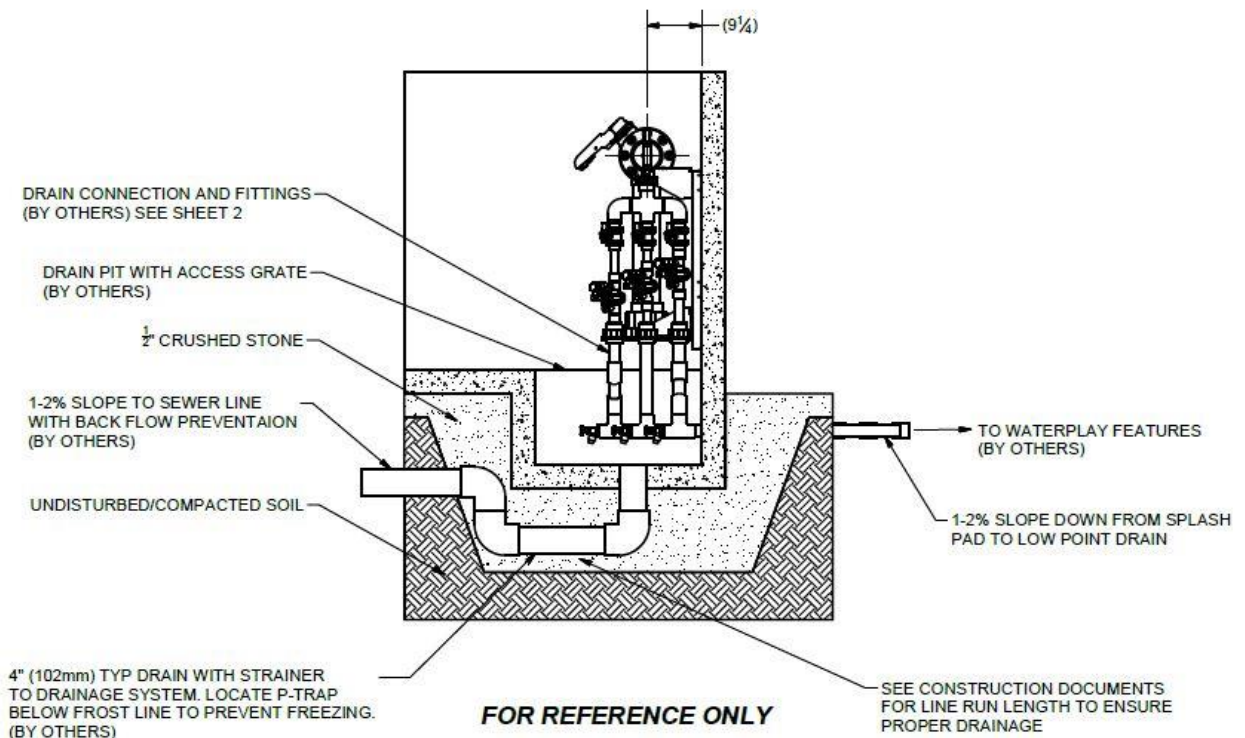


PLAYPHASE BASE SECTION DETAIL



17.0 INSTALLATION - MANIFOLD

- ◆ Reference the “For Construction” drawings for manifold location.
- ◆ Waterplay manifold systems are pre-engineered and fabricated for each park. The manifolds include solenoids valves, shut-off valves, and unions. Each solenoid valve is pre-programmed through the smartPLAY™ Controller with water conscious sequencing.
- ◆ Once installed, it is the contractor’s responsibility to ensure a qualified electrician and plumber to connect the final assembly.
- ◆ Where the manifold is supplied by others, refer to piping and valve schedule information as indicated on the “For Construction” documentation.
- ◆ Installation of ball valves, hose bibs and unions will allow for servicing and winterizing.
- ◆ Low point drainage (gravity drainage) of components is required to ensure no problems with freezing in the lines. Typically the manifold is designed to be the low point in the system but if not, a low point drainage system can be located between the manifold and the spray pad as per section 18.



- ◆ Consult local codes to determine if any additional equipment is required such as a back flow preventer, pressure regulating valve, and or water meter.

Any additional equipment must be approved by the local engineer of record before commencing work.

18.0 INSTALLATION - PARK DRAINAGE

Drain placement is to be approved by the local engineer of record before commencing work. Always follow manufacturer's specifications, local codes, labor safety laws, and authority having jurisdiction.

18.1 Spray Park Drainage

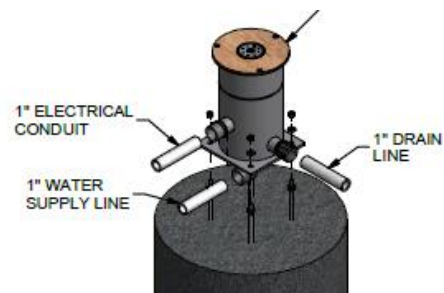
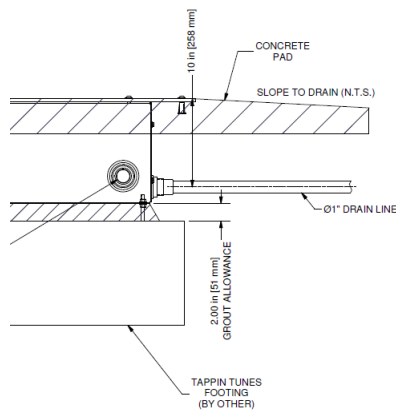
- ◆ Size drain lines to ensure water volume is discharged from the spray pad without allowing an accumulated depth of water as this could cause suction at drain covers.
- ◆ Grate openings need to be sized to local codes.
- ◆ To prevent water accumulation should one drain become blocked, facilities should have a second identical drain. Drains should be placed a minimum of 3'-0" (914 mm) apart.
- ◆ If code requires, provide an air gap for physical separation between the sewer system and park drain line.
- ◆ Drain lines need to be accessible for periodic clean out and flushing.
- ◆ Temporarily cap all unfinished pipe lines to prevent rodent & debris entry.
- ◆ If installing a water treatment system, ensure the holding tank is installed at the specified elevation and ensure a positive drainage slope in the drain line



- All connection to local sewer (or return in a recirculated system) must meet local code requirements.

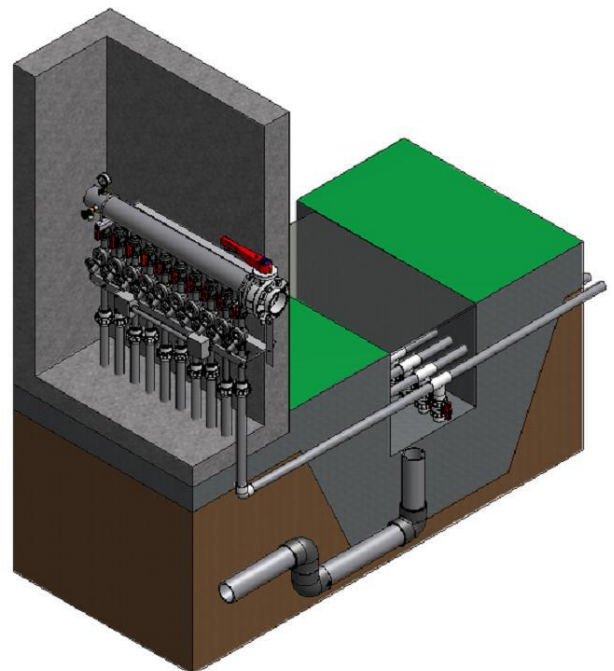
18.2 Condensate Drainage for Electrical Features

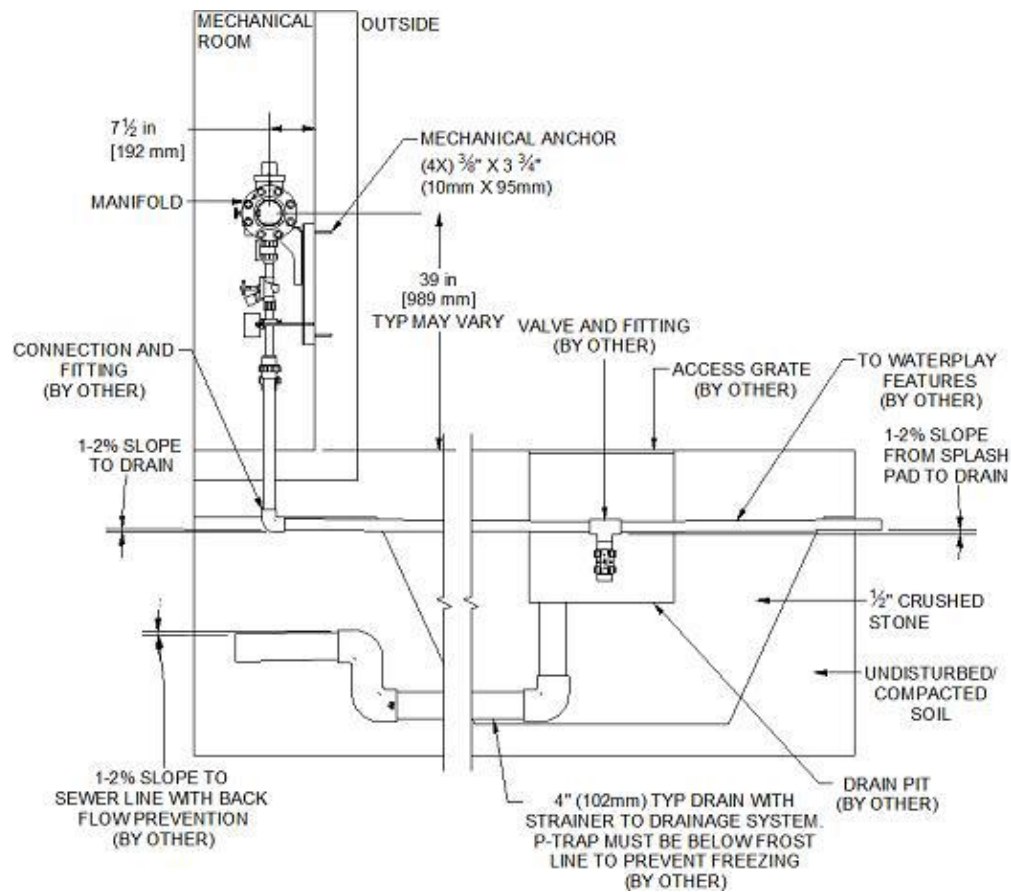
Some features with electrical wiring include a drainage hub at the base of the feature. These drain lines must be connected to a sewer drain or large drain pit. Failure to do so will result in moisture damage to the electrical components.



19.0 INSTALLATION - SUPPLY LINE LOW POINT DRAINAGE

Low point drainage (gravity drainage) of components is required to ensure no issues with freezing water in the lines during winter months in cold climates. Typically the manifold is designed to be at the low point in the system but if not, a low point drainage system can be located between the manifold and the aquatic play pad, that drains to a drain pit (French drain) or is connected to sewer. If no low point drainage is included in the design of the system, the lines will need to be blown out with compressed air for winterizing and shut down periods.





20.0 INSTALLATION - TRENCHING & PIPING

All supply/drain line slopes and diameters are to be approved by the local engineer of record prior to commencing work.

20.1 Trenching

- Excavate trenches as per the “For Construction” drawings to ensure drainage, piping, electrical conduit, and layout details are as per local codes.

20.2 Piping

- Whenever possible use loops and center split piping to ensure even water distribution to features sharing the same supply line.
- Prior to connecting Waterplay features to supply lines be sure to complete the following:



- Complete final connections to drains, manifold, and sanitary services.
- Remove any temporary caps at the end of component lines, if applicable.
- Flush all lines to purge debris utilizing the manifold as the source. This may need to be done several times to ensure the lines are clear of all debris capable of causing issues with performance nozzles and final water display.



- ◆ Complete component connections as required for a water tight seal.

21.0 INSTALLATION - PRESSURE TESTING

Be aware that some components cannot be pressure tested as there is no way to disable the flow, thus you will need to pressure test the lines prior to connecting these component. Please note that Waterplay supplied components have been pressure tested prior to shipping. Pressure testing to be completed prior to installing performance nozzles.

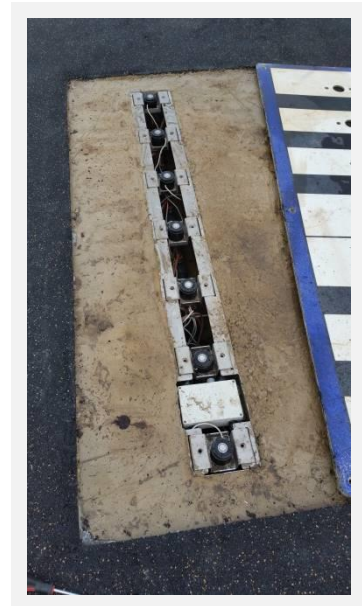
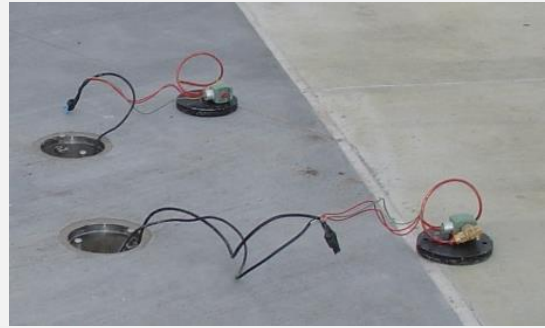
- ◆ Once all piping connections are complete and winter nozzles blanks installed, pressure test the piping network at 70 psi or as specified by the engineer.
- ◆ Slowly apply pressure and inspect all plumbing for leaks.
- ◆ Release the line pressure by carefully opening the hose bib on the manifold.
- ◆ Make any necessary repairs to areas that leak and re-test as required until all leaks have been repaired.
- ◆ If your installation includes any Puddle features make sure to remove the winter cover, and insert the 1/4-20 x 0.75 Bolt in the water outlet, when pressure testing. Pressure testing with the winter cover in place will cause damage to the cover and bolts.



- ◆ When using PVC Waterplay recommends pressure testing using water and not compressed air. Compressed air can be dangerous and cause shattering of pipes.

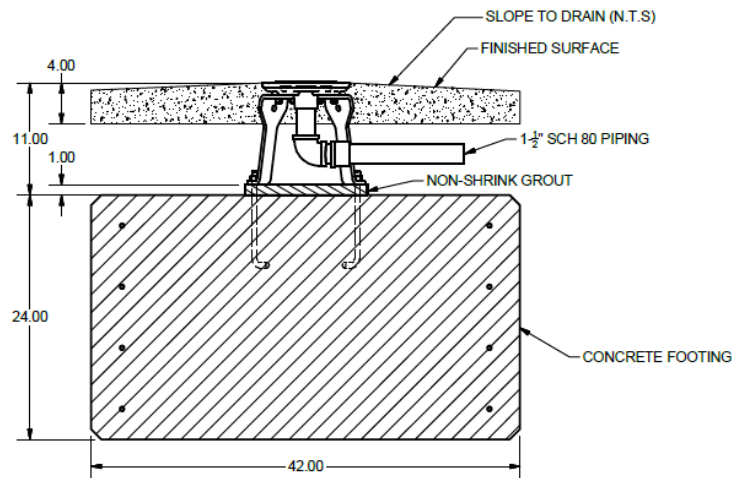
22.0 INSTALLATION - ELECTRICAL

- ◆ Electrical work must be done by a licensed Electrician as per local and national codes.
- ◆ For full controller set up see the smartPLAY Controller Setup Guide and wiring schematic supplied by Waterplay.
- ◆ Install the specified conduits from the GFI circuit breaker at the main panel to the controller, from the controller to the activator(s), and from the controller to any applicable components.
- ◆ Pull and connect the necessary conductors from the controller to the activator and applicable components as indicated in the controller manual and wiring schematic.
- ◆ Pull and connect specified conductors from the GFI circuit breaker panel to the controller as indicated in the controller manual and wiring schematic.
- ◆ On the controller terminal strip, connect each valve to the assigned terminal as indicated from the mechanical workbook and wiring schematic (e.g. Valve 1 connects to Out1 and 24V-2).
- ◆ Test all electrical features prior to securing final cover plates.



23.0 INSTALLATION - FINAL COMPONENT PREPARATIONS

- ◆ Tape off ground spray or playPHASE™ component bolt heads to ensure concrete will not cure on them.
- ◆ Place closed cell foam around the base of all features/playPHASE™ flanges where the concrete will cure. This is used to create an expansion gap and allow for caulking to seal the concrete to the flange, and help prevent cracking.
- ◆ **If installing features with flush ground panels such as Lily Pads or Action Plates**, be sure to properly secure the provided templates prior to pouring the concrete. Ensure there is a coating of concrete release agent for ease of removal once the concrete has cured. Prior to the concrete curing form a shallow V-Groove (approx. ¼", 6.25mm) around the perimeter of the template, this will reduce the chance of the concrete edge cracking.



PLAYPHASE BASE SECTION DETAIL



24.0 INSTALLATION - FINAL PAD AREA PREPARATION

Suggested backfill is to be approved by local engineer of record before commencing work.

- ◆ Backfill trenches – suggested backfill is 6” (150mm) of sand below the pipes and 8” (200mm) above.
- ◆ Backfill the aquatic pad area. Suggested backfill 6” (150mm) of base coarse aggregate.
- ◆ Place spray pad forms in preparation for pouring final slab.
- ◆ Confirm finished base for conformity with inspection elevations & sections.
- ◆ Confirm ground spray elevations correspond with final grade elevation.
- ◆ Place a moisture barrier between the base and concrete.

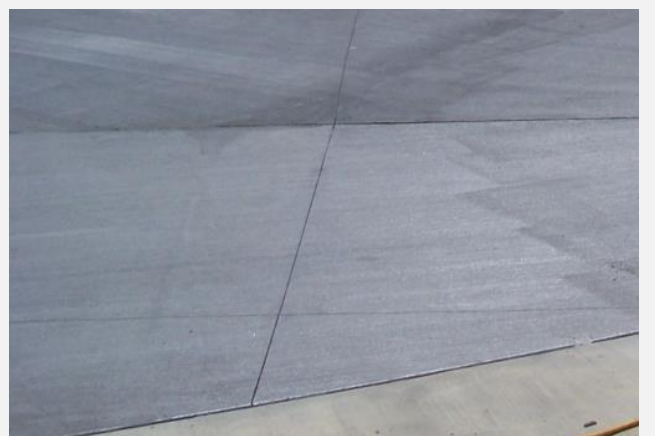
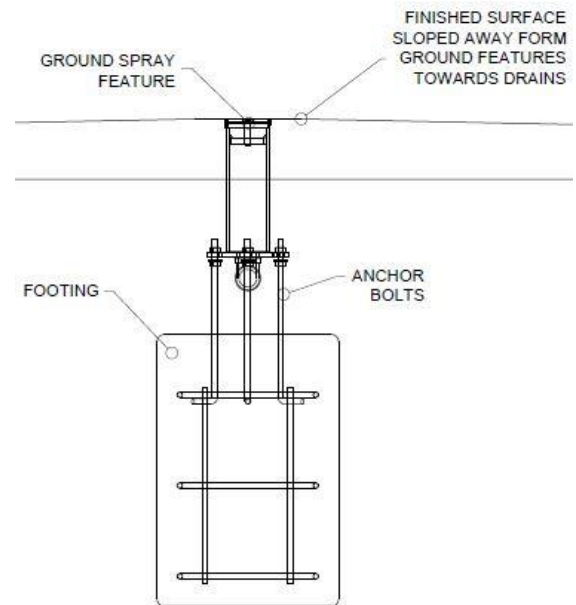


- ◆ Install slab reinforcement mesh, or reinforcing steel as specified by local Engineer(s).
- ◆ Conduct a final pressure test to ensure piping was not damaged when backfilling and compacting the base.

25.0 INSTALLATION – CONCRETE PAD POUR

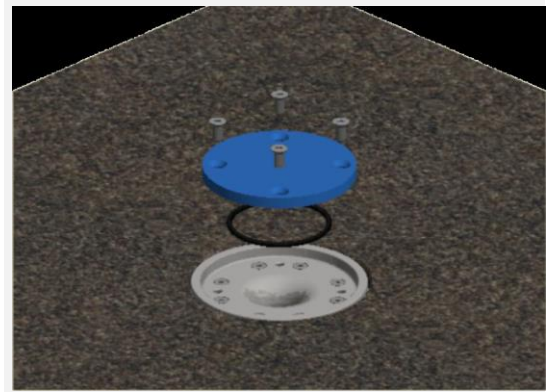
For other finish surfacing such as pour-in-place rubber, refer to manufacturer's written specifications, if required adjust height of concrete slab below to ensure correct height for features.

- ◆ Ensure the correct slope is maintained from pad surface to drains as per the “For Construction” drawings. This includes the overspray area as well.
- ◆ Eliminate low point collection areas that could create pooling around nozzles affecting the spray display as well creating a slip hazards.
- ◆ Establish expansion control joints as required.
- ◆ Ensure finished grade of concrete is flush with the top of each ground spray, playPHASE flange, and ground panels (or leave enough space for additional surfacing if required).
- ◆ Apply a light broom finish to create a textured surface, providing good traction for little wet feet.
- ◆ Clean ground sprays, above ground features and all nozzles of concrete splatter once the concreted has cured enough to allow foot access.
- ◆ Remove closed cell protective foam once concrete has set and apply a bead a caulking around the base of the feature or playPHASE base.



26.0 INSTALLATION - PLAYPHASE™ BASE FEATURES

- ◆ Remove playPHASE winter cover plate including O-ring.
- ◆ Install the ship loose feature gasket.
- ◆ Peel up feature protective wrappings approximately 16" (400mm) to allow for access to flanges and bolt holes.
- ◆ Leave remaining protective wrap in place until construction is complete.
- ◆ Place features on specified playPHASE base
- ◆ Verify the feature spray is correctly oriented.
- ◆ Tighten down all bolts for a secure watertight installation.



27.0 INSTALLATION – PERFORMANCE NOZZLES

- ◆ Remove the nozzle blanks and save them as these will be used for winterization and shutdown periods.
- ◆ Flush the system to purge all debris that could clog the performance nozzles and or alter the water spray.
- ◆ Install the performance nozzles as identified for each feature.
- ◆ Adjust nozzles to achieve desired spray effect.
- ◆ For nozzle replacement details see section 5.0.
- ◆ Nozzle removal/exchange should be conducted in the morning as a temperature rise will cause expansion of the nozzle making it difficult to remove.

28.0 INSTALLATION – FINAL ITEMS

- ◆ Remove remaining protective wrap.
- ◆ Clean excess concrete splatter, loose debris, and foreign materials from the pad and features.
- ◆ Apply joint sealer to create a moisture barrier between the concrete and the components.
- ◆ Install graphic panels, cannon tops, flower petals and palm leaves (if applicable).
- ◆ Do final inspection of components for any damage. If cleaning, polishing, or touch up paint is required, proceed as noted in section 9 Components Care and Maintenance.



- ◆ Apply a coat of wax to components as this will help keep a high-gloss finish. This only applies to powder coated or fiberglass components and not brushed stainless steel finish.
- ◆ Remove all construction material and debris from spray area.
- ◆ Post required signage and warnings
- ◆ Turn on the water!

29.0 COMMISSIONING SERVICES

Waterplay Commissioning services can be arranged for an additional fee in advance of park opening if needed. Please work with Waterplay's Project Support team to coordinate timelines. Typically 4 weeks notification is required. Commissioning can only take place once the installation and construction is complete.

30.0 TROUBLESHOOTING

If problems occur during initial startup and pressure testing see troubleshooting table below.

No.	Problem or Symptom	Possible Cause	Remedy
1	No water flows to features	Controller power OFF	Verify main power & front door switch are ON.
		Incorrect valve type	Replace with 24VAC 0.25A valves.
		Blown fuse(s)	Replace blown fuse(s) from terminal strip (see Controller Wiring Diagrams for locations & type of fuses).
		Water supply interrupted	Investigate water supply source and verify all valves are in correct position. Verify manual valves from header are in the open position. Disengage solenoids and verify water flows.
		Controller programmed incorrectly	Reprogram clock for time, date & operation time. Verify component sequence settings are correct. Test operation of aquatic facility with the controller's TEST mode



No.	Problem or Symptom	Possible Cause	Remedy
2	One (or more) zones do not run	One or more zones are wired incorrectly	<p>Verify valve wiring is completed as per the wiring diagram (Diagram in Controller manual) and piping plan.</p> <p>Test operation of aquatic facility with the controller's TEST mode to determine which component is out of sequence and correct wiring as required.</p> <p>Call Waterplay @ 1-800-590-5552 for assistance.</p>
		Solenoid Valve Failed	<p>Check controller fuses.</p> <p>Verify 24AC power at solenoid valve.</p>
		Manual Valve Closed	Verify manual valve from header is in the open position.
		Nozzle or Pipe Blockage	Verify that distribution piping and the component nozzle(s) is not blocked with debris.
3	System stops running, or stops running periodically	Loose wiring	Verify all wire connections are tight.
		Program has come to the end of the sequence	Normal operation is to stop after 5 minute duration. Test program by touching activation device.



No.	Problem or Symptom	Possible Cause	Remedy
4	Water sprays continuously	Solenoid valves in manually open position	Set control valve(s) to automatic by closing manual operator (rotate clockwise).
		Activator sensitivity set too high (LED on sensor &/or PLC is on constantly)	Adjust (reduce) sensitivity on sensor by rotating adjustment screw. Adjust so that light turns on when hand is placed on sensor and light turns off when hand is removed.
		System in Test Mode (one or more component may be spraying)	When TEST is finished, push BACK button to exit TEST screen (valves which were open will now close).
		Dirt or debris in valve body keeping valve open	Clean Solenoid valve screen and diaphragm.
		Faulty control valve or solenoid	Test solenoid valve manually. If the valve won't operate manually it is defective & requires replacement. Swap suspect valve (or solenoid) with a properly operating one to isolate problem, replace valve (or solenoid) as necessary. Check wiring drawings.
		Power connected directly to transformer (ON/OFF switch & fuse are then bypassed)	Rewire power connection according to Section 1 of Instruction Manual.



No.	Problem or Symptom	Possible Cause	Remedy
5	Activator does not start the facility	Activator sensitivity not adjusted correctly	Adjust sensitivity of activator sensor. Adjust so that light turns on when hand is placed on sensor and light turns off when hand is removed.
		Activator sensor not wired correctly	Verify sensor wiring is correct. Check wiring drawings.
6	Buckets do not return to upright position	Bushing seized up with grim and water build up.	Clean bushings and shaft with Calcitriol and clean water.
		Bushings are loose or not sitting correctly	Secure bushings or contact Waterplay for replacement bushings.
		Excessive Pressure or flow	Reduce pressure to 10 psi. Adjust flow so that bucket tips every 15 – 20 seconds.
7	Water spray height varies or drops off	Supply pressure fluctuation	Investigate water supply source. Did sequence grouping change?
8	Blown fuses	Incorrect fuse	Replace with fuse type specified in controller drawings.
		Incorrect sensor wiring	Rewire according to controller drawings.



No.	Problem or Symptom	Possible Cause	Remedy
9	No inputs or outputs or power light showing in PLC	Controller power OFF	Verify main power & front door switch are ON.
		Faulty Transformer	Contact electrician to test transformer.
		Blown fuse	Replace fuse(s).
		Damaged PLC	Contact Waterplay @ 1-800-590-5552.
10	Touch screen is blank	Loose wire connection	Verify all wire connections are tight.
		PLC is OFF	Ensure PLC power and run light are on.
		Controller power OFF	Verify main power & front door switch are ON.
		Blown fuse	Replace fuse(s).
11	Interactive sound component not working	No light on the MP3 player	<p>Refer to the wiring schematic.</p> <p>Check PLC out put on the expansion module.</p> <p>Check wiring from E-series controller terminal to the interactive panel (SND+, SND- & V-, V2).</p> <p>Check fuse.</p> <p>Check the relay.</p>




No.	Problem or Symptom	Possible Cause	Remedy
	Interactive sound component not working cont.	No sound	<p>Check for memory card.</p> <p>Check speaker balance (R or L).</p> <p>Check Volume setting.</p> <p>Clean flow switches, push buttons, and sensors.</p>
		Excessive Pressure or flow	<p>Reduce flow so that the water is about 5 ft. (1524mm). Fully cover the nozzle and wait for the sound. Continue to reduce height and cover again if still not working.</p>
12	How to change sounds		<p>Use a card reader to view the memory card on the computer.</p> <p>Find MP3 sounds (watch for copyright laws).</p> <p>Save Name sounds with the pre-fix 001_name, 002_name into a file.</p> <p>Copy MODE.txt on the card (that is the program) to the same file.</p> <p>Format card.</p> <p>Reload new sounds and MODE.txt onto card.</p>



APPENDIX A—INSPECTION LISTS (6 PAGES)



		Aquatic Play Pad Routine Inspection Checklist	
<p>The following suggested routine inspection is a recommended starting point. These items are typically addressed on either a daily or weekly schedule depending on the park. Each aquatic play pad owner is responsible for developing their own site specific inspections.</p>			
<p>If you require any replacement parts or manuals please contact Waterplay as early as possible using our toll free number 1-800-590-5552 or +1 250-712-3393, or by email at support@waterplay.com.</p>			
INSPECTION INFORMATION			
Facility Name:			
Inspection by:		Date:	
GENERAL			
<input type="checkbox"/> the manifold and controller are inaccessible to the public and locked			
<input type="checkbox"/> litter receptacles are empty			
<input type="checkbox"/>			
SURFACE			
<input type="checkbox"/> area is free of obstructions and trip hazards			
<input type="checkbox"/> aquatic play pad is free of litter debris and clean (sweep and/or hose down if required)			
<input type="checkbox"/>			
DRAINAGE			
<input type="checkbox"/> grates are securely anchored and free of debris allowing for good water flow			
<input type="checkbox"/> there are no finger or toe entrapment possibilities			
<input type="checkbox"/>			
COMPONENT AND WATER FEATURES			
<input type="checkbox"/> there are no visible clothing entanglement hazards			
<input type="checkbox"/> component water displays are as expected (if not, may indicate valves and/or nozzles need cleaning)			
<input type="checkbox"/> overspray of the components does not reach the surrounding landscape			
<input type="checkbox"/> nozzles spray at a safe pressure			
<input type="checkbox"/> clean/rinse features regularly to prolong finish			
<input type="checkbox"/> inspect all features for signs of vandalism			
<input type="checkbox"/> inspect rotating features for signs of wear or damage from misuse			
<input type="checkbox"/>			
WATERPLAY RECIRCULATING SYSTEMS			
<input type="checkbox"/> visually inspect system for water leaks			
<input type="checkbox"/> check water level in holding tank is normal			
<input type="checkbox"/> check pump strainer basket, clean as required			
<input type="checkbox"/> check controller logs for alarms which may indicate reoccurring problems			
<input type="checkbox"/> check CO2 tank and chlorine feeder chemical levels			
<input type="checkbox"/> verify ORP and PH controller calibration vs manual test results			
<input type="checkbox"/> monitor pump pressure, flow, temperature and noise for changes that might indicate required maintenance			
<input type="checkbox"/> ensure there is <8-10psi differential (above start-up / clean pressure) measured across the sand filter(s)			
<input type="checkbox"/> test CO2 monitor to ensure gas leak would be detected			
<input type="checkbox"/> if applicable, confirm that the strainer basket at the diverter valve is clean			
<input type="checkbox"/> refer to the WTS Operations and Maintenance Manual for further details (available from Waterplay)			
<input type="checkbox"/> clean chemical sensors if inconsistent readings and increased need to calibrate pH is observed			
<input type="checkbox"/>			



Aquatic Play Pad Spring Startup Inspection

The following checklist is a recommended starting point. Each aquatic play pad owner is responsible for developing their own site specific inspection procedure. Maintenance contracts with qualified contractors is recommended when internal resources are not suitable. Refer to Operations and Installation Manual for more detailed information.

If you require any replacement parts or manuals please contact Waterplay as early as possible using our toll free number 1-800-590-5552 or +1 250-712-3393, or by email at support@waterplay.com.

INSPECTION INFORMATION

Facility Name:

Inspection by:

Date:

GENERAL

- ☐ the manifold and controller are inaccessible to the public and locked
- ☐ litter receptacles are empty
- ☐

SURFACE

- ☐ area is free of obstructions and trip points
- ☐ surface is free of damage and deterioration
- ☐ inspect caulking around components, re-apply if required
- ☐ pad surface is free of litter and debris, clean pad surface with pressure washer if required
- ☐

DRAINAGE

- ☐ the drains are still smooth and flush with the final grade
- ☐ no water is able to accumulate on the pad
- ☐

COMPONENT AND WATER FEATURES

- ☐ inspect all coatings, fiberglass parts and graphics for wear and tear
- ☐ remove hard water stains to prolong coating life and restore finish (recommend Calcirol)
- ☐ ensure there are no sharp points, protrusions or projections
- ☐ moving parts are inspected for wear and tear (i.e. rotating hubs, dumping buckets) replace if required
- ☐ moving parts are securely fastened according to their assembly instructions
- ☐ anti seize has been applied to fasteners and fasteners are secured to the proper torque
- ☐ ground spray nozzle O-rings are lubricated
- ☐ nozzle orifices are clean
- ☐ ground sprays are still flush with final grade
- ☐ replace all feature drain plugs if left out during winter
- ☐ winter blank nozzles replaced with performance nozzles
- ☐



Aquatic Play Pad Spring Startup Inspection

CONTROLLER, MANIFOLD, ACTIVATORS

- ☐ verify current day and time (24 hour clock)
- ☐ verify hours of operation
- ☐ run controller in test mode to ensure all solenoid valves are working as intended, clean if required
- ☐ test all activators to ensure that the controller is receiving an input
- ☐ verify that when running in program sequence, the facility is operating as intended
- ☐ if sound features installed, confirm that the MP3 player has the sound card and operates as expected
- ☐ confirm that the electrical connections are water tight and free from corrosion
- ☐

WATER FLOWS AND PRESSURE

- ☐ flush manifold and components with nozzles removed to ensure no debris has built up over the winter
- ☐ nozzle displays are as per Waterplay specification sheets
- ☐ overspray of the components does not reach the surrounding landscape
- ☐ nozzles spray at a safe pressure
- ☐

WATER MANAGEMENT SYSTEMS

- ☐ inspect and clean holding tank and fill with clean water
- ☐ ensure CO2 tank is full, and chlorine pucks are available on site
- ☐ close low point drains and replace all drain plugs (pump(s), sand filter(s), etc.)
- ☐ set sand filter multi-port valve(s) (if applicable) to filter mode
- ☐ if UV applies, ensure lamp and quartz sleeves are installed and electric connections to the module are tight
- ☐ replace pump strainer baskets that were stored for winter
- ☐ calibrate chemical probes
- ☐ fill pump strainer baskets and ensure water level does not drop in 20 minutes
- ☐ set dynamic bypass valve (if applicable) in "auto" position
- ☐ test system alarms (i.e. low pressure, chemical, UV)
- ☐ secure the WTS housing and equipment hatches from the public
- ☐ if applicable, confirm that the diverter valve is in the correct position
- ☐ refer to the WTS Operations and Maintenance Manual for further details (available from Waterplay)
- ☐

CONCERNS REQUIRING CORRECTIVE ACTION AND/OR PARTS NEEDED

☐

☐

☐

☐



Aquatic Play Pad Winterization and Shutdown

The following checklist is a recommended starting point. Each aquatic play pad owner is responsible for developing their own site specific inspection procedure. Maintenance contracts with qualified contractors is recommended when internal resources are not suitable. Refer to Operations and Installation Manual for more detailed information.

If you require any replacement parts or manuals please contact Waterplay as early as possible using our toll free number 1-800-590-5552 or +1 250-712-3393, or by email at support@waterplay.com.

INSPECTION INFORMATION

Facility Name:

Inspection by:

Date:

GENERAL

- ☐ aquatic play pad is free of litter and debris
- ☐ litter receptacles are empty
- ☐ fences and gates have been inspected to ensure that the area is secure
- ☐ the manifold and controller are inaccessible to the public and locked
- ☐

DRAINAGE


- ☐ grates are securely anchored
- ☐ water drains through to sewer with no accumulation in the drain lines
- ☐

WATERLINES AND MANIFOLD

- ☐ the main line is shut off and drained
- ☐ manifold has been drained completely
- ☐ individual component supply lines:
 - ☐ have been drained completely using low point drainage
 - ☐ hose bibs are in open position
 - ☐ solenoids on manifold are in the open position
 - ☐ compressed air has been used to assist in clearing water from the system (recommended)
 - ☐ RV antifreeze has been introduced to any low points not able to be drained completely
- ☐

COMPONENTS

- ☐ detachable facades have been removed for seasonal storage, including but not limited to:
 - ☐ cannon heads
 - ☐ graphics panels
 - ☐ buckets
 - ☐ flower petals
- ☐ if applicable, remove pop-it valves and store in a secure location
- ☐ remove all performance nozzles and install nozzle blanks (only after lines are cleared of water)
- ☐ remove feature low point drain plugs if applicable
- ☐ coatings, fiberglass and graphics have been cared for as per Waterplay Owners and Installation Manual
- ☐

	<p align="center">Aquatic Play Pad Winterization and Shutdown</p>
<p align="center">CONTROLLER</p>	
<input type="checkbox"/> turn off controller	
<input type="checkbox"/> shut off power to the controller	
<input type="checkbox"/>	
<p align="center">WATER MANAGEMENT SYSTEMS</p>	
<input type="checkbox"/> drain holding tank, some water may need to be left in the tank to prevent the tank from lifting in high groundwater conditions.	
<input type="checkbox"/> backwash and drain sand filter(s) (leave drain cap off)	
<input type="checkbox"/> depress multi-port valve (if applicable) and rotate valve top between any two positions	
<input type="checkbox"/> manually turn Jandy valves (if applicated) between any two positions	
<input type="checkbox"/> drain pump(s), manifold and UV (if applicable) by removing the drain plugs	
<input type="checkbox"/> empty chemical tanks and store or dispose of chemicals per local regulations	
<input type="checkbox"/> remove and store chemical probes in soaking caps with storage solution or potable water	
<input type="checkbox"/> if UV applies, ensure lamp and quartz sleeves are stored above freezing temperatures	
<input type="checkbox"/> remove, clean, and store pump strainer basket(s) in a secure location	
<input type="checkbox"/> leave dynamic bypass valve (if applicable) in "open" position	
<input type="checkbox"/> secure the WTS housing and equipment hatches from the public	
<input type="checkbox"/> refer to the WTS Operations and Maintenance Manual for further details (available from Waterplay)	
<input type="checkbox"/>	
<input type="checkbox"/>	
<p align="center">CONCERNS REQUIRING CORRECTIVE ACTION AND/OR PARTS REQUIRED BEFORE SPRING</p>	
<input type="checkbox"/>	
<input type="checkbox"/>	
<input type="checkbox"/>	
<input type="checkbox"/>	

APPENDIX B–WATER QUALITY LOG (2 PAGES)



INDEX

pH	Measurement of how acidic/basic water is, the range is 0-14 with 7 being neutral. WP Recommends between 7.0 and 8.0
ORP	Oxidation-Reduction Potential. ORP measures the oxidizing power of the sanitizer (ability to kill germs and bacteria). WP recommends between 650 and 850mv
Combined Chlorine	Residual chlorine may combine with nitrogen containing substances (such as urine or sweat) and produce chloramines. WP recommends < 1 PPM
TDS	Total Dissolved Solids is a combination of all the dissolved minerals, body oils, and other similar dissolved materials in the water. WP recommends < 1000 PPM
Hardness	Hardness is the level of calcium dissolved in the water. WP recommends between 150 and 400 ppm
Total Alkalinity	Total Alkalinity (TA) is a measure of water's resistance to change in pH, WP recommends 80 to 120 ppm.

CAUTIONS

pH	High pH may result in scaling, calcium buildup, cloudy water, irritated eyes/nose/skin, drop in disinfection potential of chlorine. Low pH may result in eroding of grouting or plaster, corroding of metals, rapid dissipation of chlorine, irritated eyes/nose/skin
ORP	Too low of an ORP reading will mean the pool does not have adequate sanitizer and bacterial growth or other unwanted reactions may occur. Too high of an ORP reading means there is too much sanitizer, an odor may be present and there is potential for irritation of the eyes/nose/skin
Combined Chlorine	Combined chlorine should always be minimized. Too much combined chlorine will result in an odor and eye or skin irritations. Combined chlorine is not an effective disinfectant.
TDS	High TDS will reduce the effectiveness of sanitizer. May contribute to corrosion, scale formation and other maintenance issues.
Hardness	Hardness can contribute to dull cloudy water, scale formation, corrosion of the components and equipment.
Total Alkalinity	Total Alkalinity can cause the pH to become unstable and difficult to maintain. Will contribute to cloudy water and decrease disinfectant effectiveness.



r: 180321