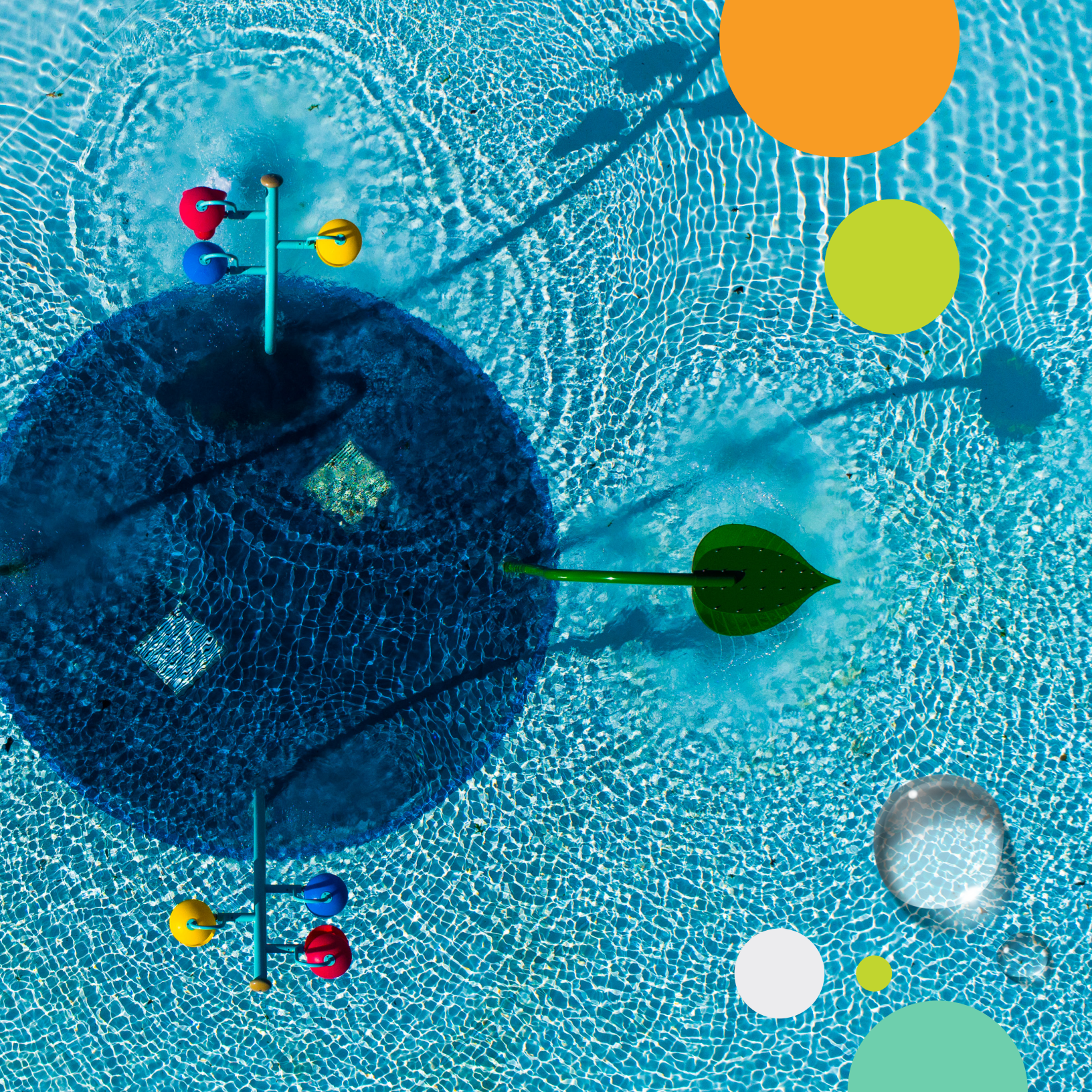


WATER MANAGEMENT SOLUTIONS



waterplay[®]

www.waterplay.com





SOLUTIONS TO FIT YOUR **PROJECT NEEDS**

WATER MANAGEMENT IS ABOUT MAKING THE WATER WORK FOR THE NEEDS OF YOUR AQUATIC PLAY DESIGN AND THE SURROUNDING INFRASTRUCTURE.

With different options for every project, Waterplay's tools and systems lead the industry in technology and function. Knowing what happens with the water is a major factor of your design and construction. Work with Waterplay to find the best solution for your space.

ACTIVATORS

START THE WATER

The activator is an interactive feature that sends a signal to the controller that a waterplayer wants to use the splash park! A perfect solution for reducing water consumption while maximize play value through action-reaction play outcomes.

START THE FUN!

PUSH, SPIN, TAP OR TURN TO
START THE FLOW OF WATER!



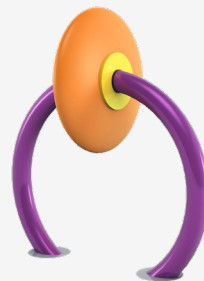
POWER
POST*



SPROUT*



PRESTO*




RINGMASTER



WHIRLER



PLAYPHASE™
FOOT ACTIVATOR

 Knowing what happens with the water is a big part of your project. Work with Waterplay to find the best solution for your space. Visit www.waterplay.com for more information.

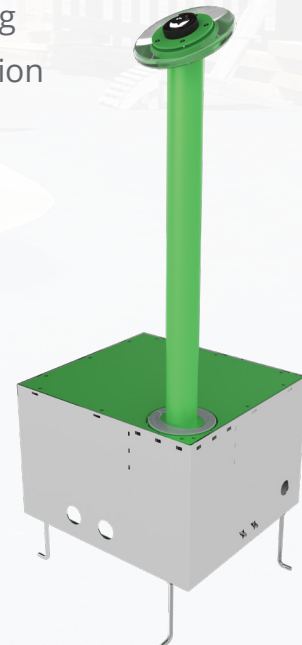
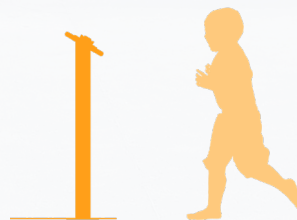


ECO ACTIVATOR

A SIMPLE SOLUTION FOR SMALL SPACE DESIGNS

The Eco Activator is an integrated controller, manifold and activator all-in-one. The perfect tool for designing small parks in a sprawling urban metropolis or situations where smaller splashes are just enough!

- ✓ Below-grade controller sets operating hours and four valve manifold turns park on and off
- ✓ Supports up to 40 GPM (151 LPM)
- ✓ Built-in playPHASE mount
- ✓ Requires one 1.5" (38mm) water supply line
- ✓ Anti-slip powder coating
- ✓ Flush-to-grade installation
- ✓ Hard-wired



*Compatible with Power Post, Sprout, Presto and Maestro.

CONTROLLERS

CONTROL THE WATER

The brains behind the operation—the controller tells the water source what it should do and when to do it. The controller works in conjunction with the manifold and activator to create the perfect play experience for your project.



smartPLAY™ CONTROLLER

ALL THE BELLS AND WHISTLES

- Ability to connect remotely with smartACCESS™
- Programmable PLC features intuitive colour touch screen for easy use
- User configurable sequencing
- Local valve reassignment
- Easy to use 24 hour programming clock, timer and calendar
- Ability to program and synchronize water and light features to create a spectacular display

SEQUENCING

Add sequencing to your aquatic play adventure to create more fun on the pad while conserving water. Contact us today to learn more about sequencing best practices and how to make the water work for your space.

smartACCESS™

CONNECT REMOTELY

Use with the smartPLAY Controller, smartACCESS™ puts water control in your hands... wherever you are. Control multiple play spaces from one screen through the intuitive user interface and collect data for analyzing and reporting. Waterplay's smartACCESS connects you to what's happening at your play space anywhere, anytime.

- ✓ Ability to sequence and manage water consumption remotely
- ✓ Automated data logging options
- ✓ Online access to your play space reduces on-site maintenance and operation costs
- ✓ Technical videos available to support maintenance staff on the go
- ✓ Simple user interface
- ✓ Cross-channel access available for PC and Mac, tablet, and smartphones
- ✓ Technical support provided



BASIC CONTROLLER

FOR MINIMAL SPLASH PAD REQUIREMENTS...

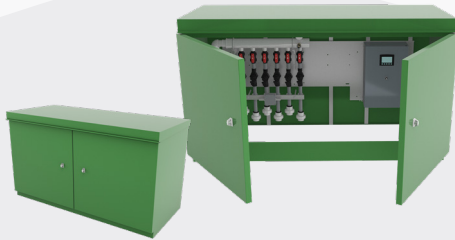
Some spaces are designed to be simple. The Basic Controller is a value engineered solution that meets your essential play space needs.



CONTROL CENTERS

DISTRIBUTE THE WATER

Transfer the water from the main water supply out to your aquatic play features with Waterplay's high efficient distribution options. Depending on the project size, Waterplay has a solution to best suit your water distribution goals.



ABOVE GRADE KIOSK

The kiosk is an above ground, safe and lockable self-enclosed system designed to go next to the play area.

- ✓ Aluminum construction
- ✓ Preassembled with the 6, 10 or 18 value manifold
- ✓ Tamper resistant
- ✓ Fits into any space
- ✓ Integrates with the smartPLAY™ Controller (Sold separately)



BELOW GRADE VAULT

The vault is an underground, self-enclosed system with a durable, tamper resistant hatch that accesses the manifold and controller.

- ✓ Aluminum construction & environmentally friendly
- ✓ Preassembled with the 6, 10 or 18 value manifold
- ✓ Anti-slip powder coating
- ✓ Fits into any space (Flush-to-grade)
- ✓ Integrates with the smartPLAY™ Controller (Sold separately)



WALL MOUNTED MANIFOLDS

The manifold is the workhorse behind water distribution. Waterplay's high efficiency manifold ensures that water gets to where it needs to be accompanied with the flow rate that you require.

- ✓ Ideal for installing inside an existing utility building
- ✓ Available in 6, 9, 12, 15 and 18 valve configurations to adapt to any project size.



SYSTEMS



MANAGE THE WATER RECIRCULATION

Waterplay's recirculation system functions as a closed water management unit that continually recycles treated water to and from the play space.

- Sustainable choice—recirculated systems drastically reduce water consumption
- Provides 100% filtration and disinfection
- Intelligent automation reduces operational burden
- Small footprint adapts easily to space requirements
- Pre-engineered, factory built and tested
- Recommended for areas susceptible to droughts and projects looking for maximum water efficiency

HOW IT WORKS...

3

DRAIN

The drain leads the water away from the play space and filters debris.

4

DIVERTER & STRAINER

The diverter & strainer captures secondary debris and redirects rainwater to reduce overall chemical consumption.

2

CONTROLLER & MANIFOLD

The smartPLAY™ Controller & manifold work together to route the water to the play space based on programmed sequences.

1

ACTIVATOR

Waterplayers interact with the activator to trigger the controller.



UV
TREATMENT
AVAILABLE

2

6

1

3

4

5

5

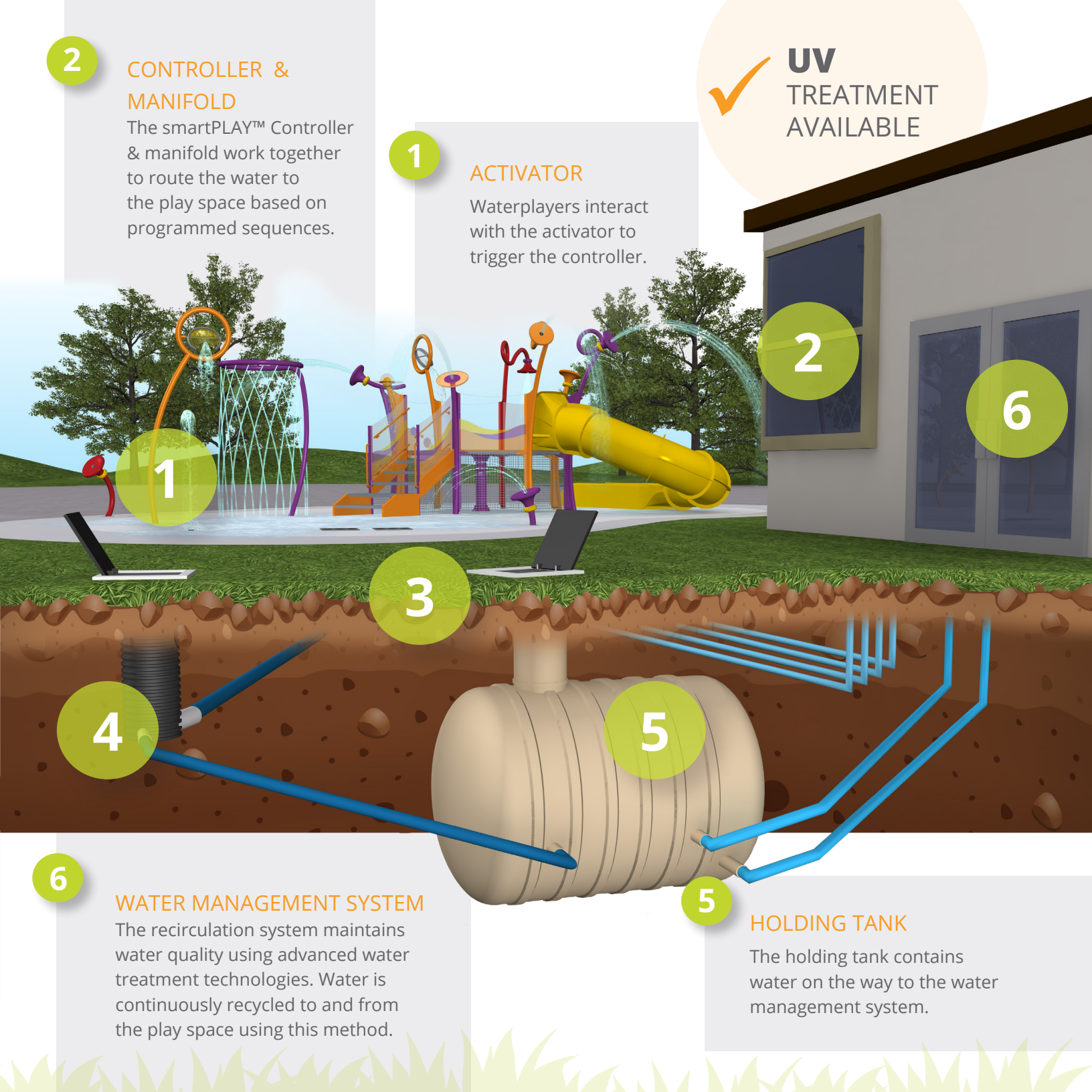
6

WATER MANAGEMENT SYSTEM

The recirculation system maintains water quality using advanced water treatment technologies. Water is continuously recycled to and from the play space using this method.

HOLDING TANK

The holding tank contains water on the way to the water management system.



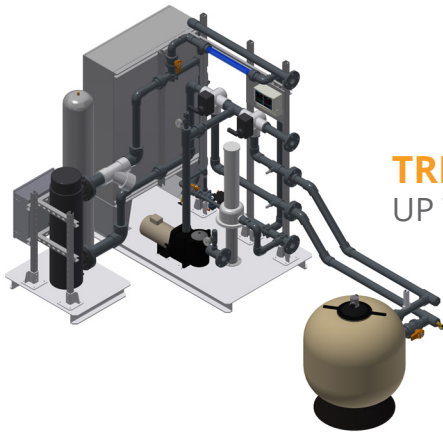
SYSTEMS

RECIRCULATION OPTIONS

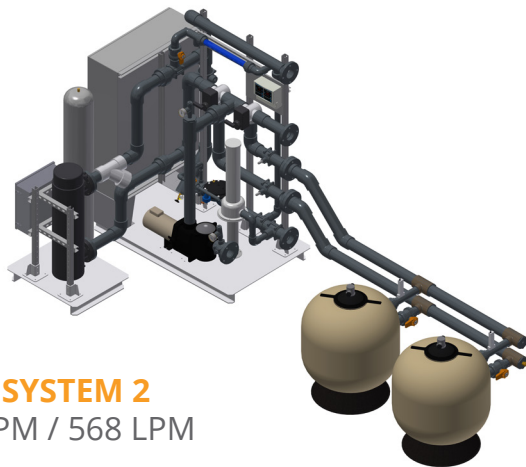


SAVE WATER

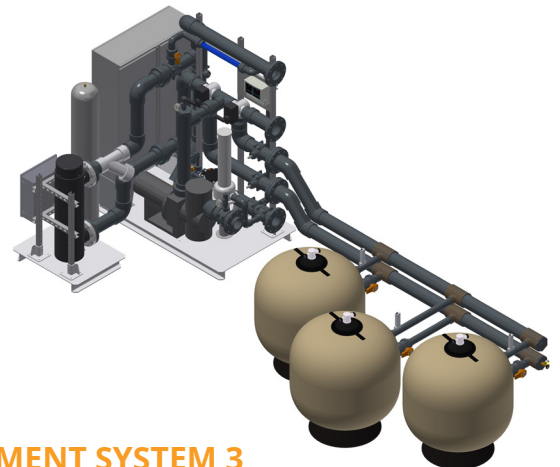
RECIRCULATION
SYSTEMS ARE BEST
FOR SUSTAINABLE
SPACE DESIGN.



TREATMENT SYSTEM 1
UP TO 75 GPM / 284 LPM



TREATMENT SYSTEM 2
UP TO 150 GPM / 568 LPM



TREATMENT SYSTEM 3
UP TO 300 GPM / 1136 LPM



Knowing what happens with the water is a big part of your project. Work with Waterplay to find the best solution for your space. Visit www.waterplay.com for more information.



SYSTEMS

MANAGE THE WATER RETAIN & REUSE

Plan your space with goals! Retain & reuse systems capture and repurpose water from the play pad for alternative uses within the community.

- Repurpose water with consideration to the environment and local infrastructure
- Low power consumption
- Reduces municipal water use and associated costs
- Adaptable to local codes and regulations
- Recommended for projects with environmental and water conservation plans that revolve around reclaimed water strategies

HOW IT WORKS...

3

DRAIN

The drain leads the water away from the play space and filters debris.

4

HOLDING TANK

The holding tank contains water on the way to the water management system.



1

ACTIVATOR

Waterplayers interact with the activator to trigger the controller.

CONTROLLER & MANIFOLD

The smartPLAY™ Controller & manifold work together to route the water to the play space based on programmed sequences.

2

6

3

1

2

5

6

REPURPOSE

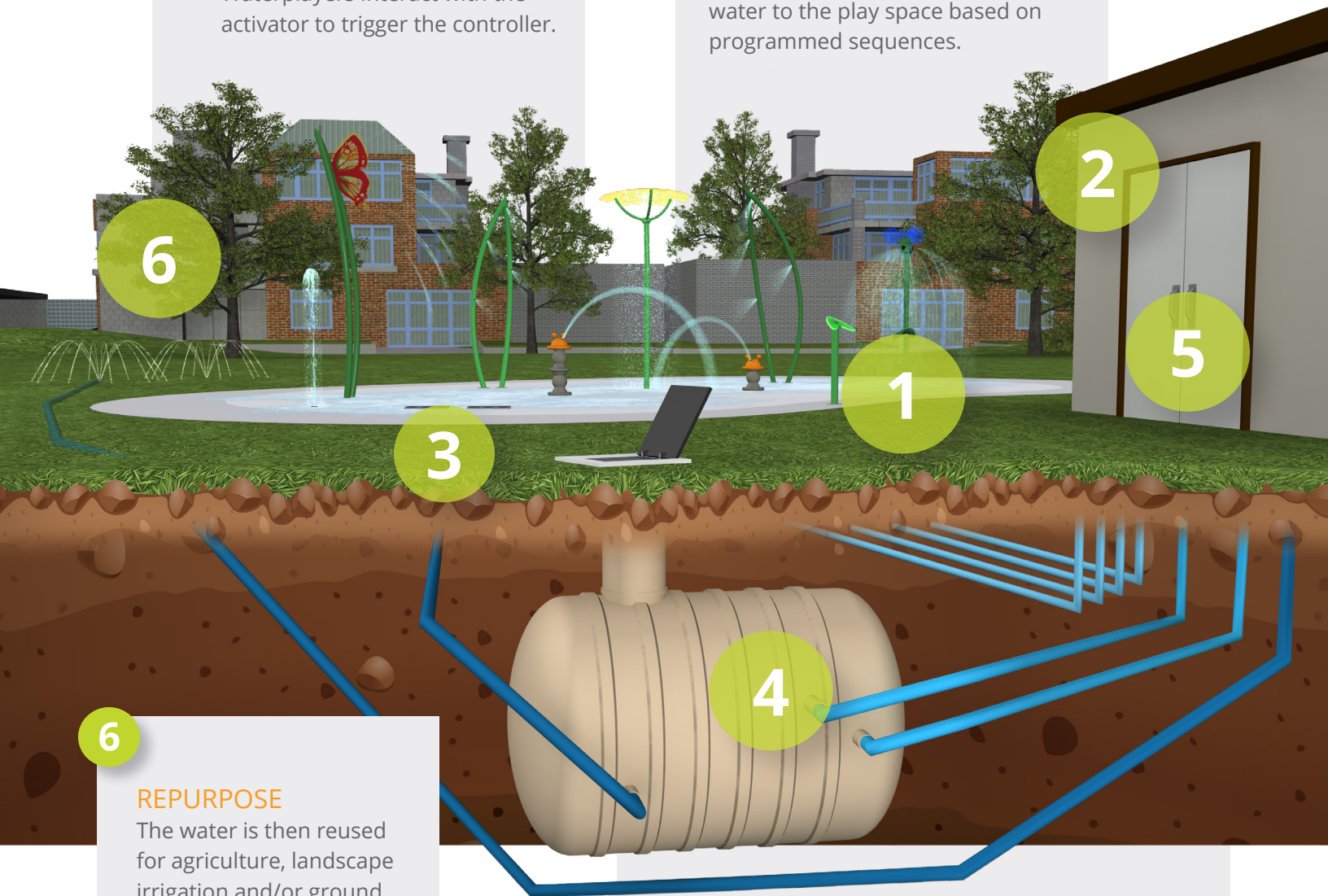
The water is then reused for agriculture, landscape irrigation and/or ground water recharge.

4

5

WATER MANAGEMENT SYSTEM

The retain and reuse system filters and disinfects the water as per local regulations. The water is then pushed to the irrigation system.



SYSTEMS

MANAGE THE WATER FLOW THROUGH

Waterplay's flow through water management system drains into the local sanitary or storm drain system. The water is then handled according to local municipal water management strategies.

- Low initial capital investment
- No chemicals required
- Low maintenance costs
- Recommended for projects needing a simple water management solution

HOW IT WORKS...



1

ACTIVATOR

Waterplayers interact with the activator to trigger the controller.

2

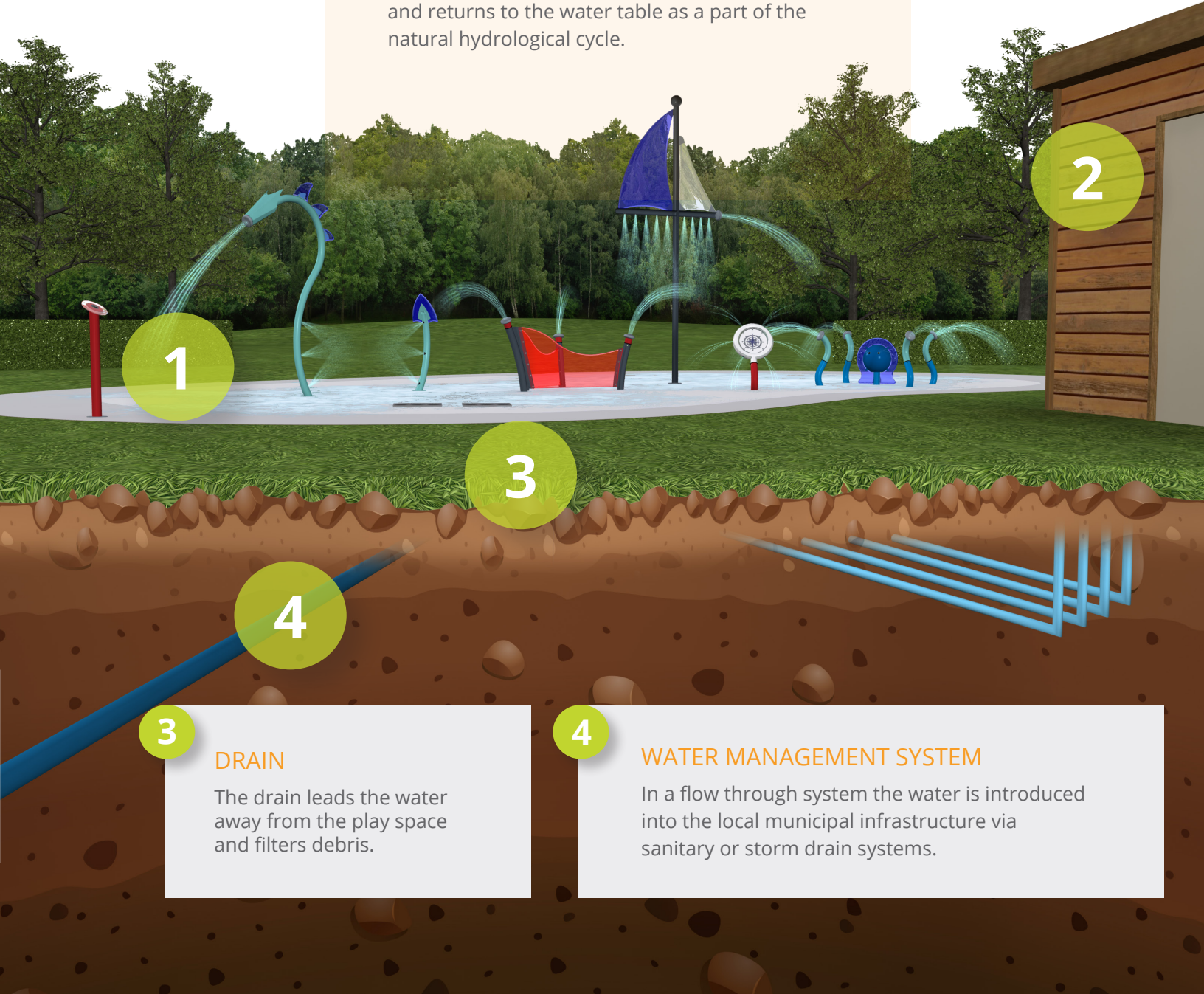
CONTROLLER & MANIFOLD

The smartPLAY™ Controller & manifold work together to route the water to the play space based on programmed sequences.



PERCOLATION

Consider a percolation system: water percolates from a below ground containment system and returns to the water table as a part of the natural hydrological cycle.



3

DRAIN

The drain leads the water away from the play space and filters debris.

4

WATER MANAGEMENT SYSTEM

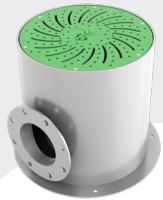
In a flow through system the water is introduced into the local municipal infrastructure via sanitary or storm drain systems.

COMPONENTS

DRAINS, HATCHES AND TANKS

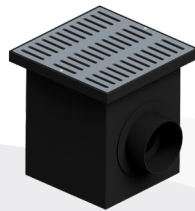
Every detail matters. Just a few more considerations for your splash pad design...

DRAINS



STAINLESS
STEEL DRAIN

Waterplay's drains ensure that water is quickly drained away from the play space and ensures safety for all waterplayers. Choose from our two options for the style and functionality you need.

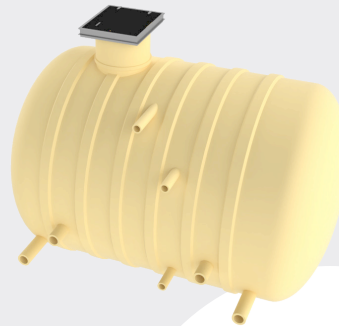


CLASSIC
DRAIN

HATCHES



Quick access for your maintenance needs. This hatch is sized perfectly for quick, simple entry.



WATER TANK

Every project needs a water tank--this tank is sized for optimal water administration.



WATER MANAGEMENT SOLUTIONS THAT COMPLEMENT SPLASH PADS PERFECTLY!



With over 30 years of industry experience, Waterplay has helped shaped thousands of aquatic play spaces around the world. Quality, tireless dedication to innovation and unmatched customer service are what set us apart from our competitors. Contact us today to experience [#theWaterplayDifference](#).

1.800.590.5552 (USA & CAN) | +1 (250) 712.3393 (INTL)

Global Head Office: 805 Crowley Avenue, Kelowna, BC, V1Y 7G6 Canada

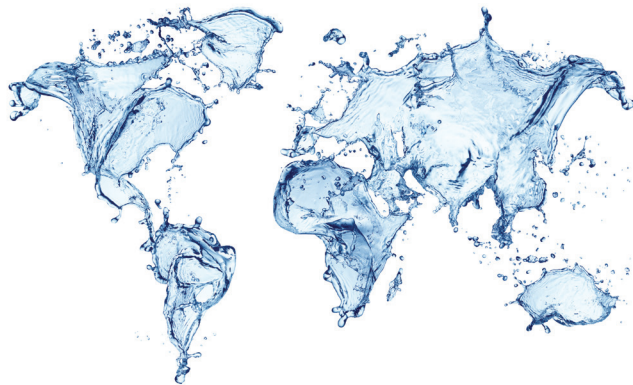
Visit www.waterplay.com to get started on your next project today.

Follow us:



W W W . w a t e r p l a y . c o m

AFRICA | ASIA | AUSTRALIA | EUROPE | NORTH AMERICA | SOUTH AMERICA



**WOMEN
OWNED**